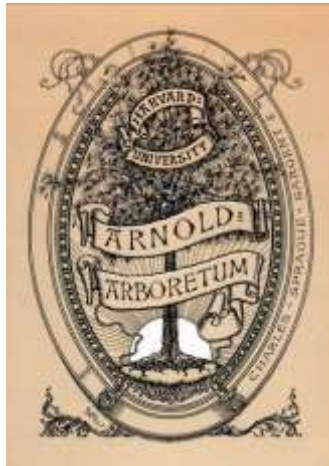


Archives II A-4

**Susan Delano McKelvey (1883-1964) papers, 1900-2005: Guide.**



Archives of the Arnold Arboretum of Harvard University

Jamaica Plain, Massachusetts

© 2013 President and Fellows of Harvard College

## **Susan Delano McKelvey (1883-1964) papers, 1900-2005: Guide.**

Archives of the Arnold Arboretum of Harvard University

© 2013 President and Fellows of Harvard College

### **Descriptive Summary**

**Repository:** Arnold Arboretum, Jamaica Plain, MA 02130.

**Call No.:** II A-4

**Creator:** McKelvey, Susan Delano.

**Title:** Susan Delano McKelvey (1883-1964) papers, 1900-2005.

**Dates:** 1900-2005.

**Quantity:** 25.5 linear feet (48 boxes).

**Abstract:** This collection was divided when materials from the Arnold Arboretum were sent to the Library of the Gray Herbarium in Cambridge. It was reunited in 2005 at the Arboretum. It includes articles, research papers and notes, correspondence, photographs, maps, and manuscripts. The McKelvey papers reflect her activities as a member of the Arboretum Visiting committee, a research associate working with lilacs and yuccas, and a botanical explorer of the Southwestern United States. The collection spans 1900-2005.

**Note:** Access to Finding Aid record in [Hollis Classic](#) or [Hollis](#).

**Preferred Citation:** Susan Delano McKelvey papers. Archives of the Arnold Arboretum of Harvard University.

**Additional Material:** More Susan Delano McKelvey correspondence may be available in the [Arnold Arboretum Correspondence Database](#).

### **Processing Information**

Processed, Mary Harrison, Sheila Connor. Yucca inventory, Lisa DeCesare. Collection integrated July 2011, Sara Beneman. Revised August 2011, Liz Francis. Photograph boxes re-numbered after 2013 digitization project, Liz Francis.

### **Acquisition Information**

**Provenance:** The McKelvey papers were willed to the Arnold Arboretum in 1960 and received in 1964. The collection was then transferred from the Arnold Arboretum's departmental holdings to the Arboretum's Archives in 1986, when the Archive was established. Materials concerning McKelvey's research on Yuccas were previously held at the Library of the Gray Herbarium in Cambridge, but were transferred to the Arnold Arboretum in 2005.

### **Terms of Access**

Researchers seeking to examine archival materials are strongly encouraged to make an appointment. The Director, or an office of origin, may place restrictions on the use of some or all of its records. The extent and length of the restriction will be determined by the Director, office of origin, and the Archivist and will be enforced equally for all researchers.

## Terms of Use

The copyright is held by The President and Fellows of Harvard College for the Arnold Arboretum Archives of Harvard University. The copyright on some materials in the collection may be held by the original author or the author's heirs or assigns. Researchers are responsible for obtaining written permission from the holder(s) of copyright and the Arnold Arboretum Archives prior to publishing any quotations or images from materials in this collection.

Photocopies may be made at the discretion of the Arnold Arboretum Archives staff. Permission to make photocopies does not constitute permission to reproduce or publish materials outside the bounds of the fair use guidelines.

## Biographical Note

Susan Delano McKelvey was born in 1883 in Philadelphia. A graduate of Bryn Mawr, class of 1906, she married a young attorney, Charles Wylie McKelvey, in 1907. A socialite, cousin of President Franklin Delano Roosevelt, and mother of two sons, McKelvey left New York for Boston after her marriage ended.

The collection reflects McKelvey's activities as a research associate working first on cultivated lilacs, then on yuccas growing in the wild in the southwest, and finally on the natural and cultural history of the western United States. For her three scholarly publications: *The Lilac: A Monograph* (1928); *The Yuccas of the Southwestern United States, Parts 1 and 2* (1938, 1947); and *The Botanical Exploration of Trans-Mississippi West 1790-1850* (1955 [1956]),

McKelvey was the recipient of the Sarah Gildersleeve Fife Memorial Award by the New York Botanical Garden, the Centennial Gold Medal from the Massachusetts Horticultural Society, the Schaffer Medal from the Pennsylvania Horticultural Society, and from the Garden Club of America the Emily Renwick Achievement Award. As a member of Harvard's Committee to Visit the Arnold Arboretum from 1928 until 1964, she was an active supporter of the Arboretum.

As a self-taught scientist Susan Delano McKelvey is an example of the women working in the field of botany and in natural history museums during the first half of the 20th century. McKelvey began her association with the Arnold Arboretum in 1919 when she contacted Charles Sprague Sargent, the Arboretum's founding director, wishing to volunteer and to study landscape architecture. Initially limited to washing pots in the greenhouse, McKelvey proved her worth, and at Sargent's urging began studying the Arboretum's



Photograph courtesy of Jon Katherine McKelvey

plants. It was an association with the institution that would continue for the next 45 years.

Her work on the lilac (*Syringa*) took her to nurseries, arboreta, and botanic gardens in the United States, Canada, England, France, and Hungary where she studied both living collections and dried herbarium specimens. It was her exploration of the southwest that would demand that she study, collect, and document plants growing in the wild.

Accompanied by Oscar Edward Hamilton -- her chauffeur, protector, photographer, and amanuensis -- McKelvey would make 8 trips over 8 years to the American southwest. On her first trip (October 11 – November 11, 1928) she and Hamilton traveled with the redoubtable plant collector Alice Eastwood. Eastwood, also largely self-educated, had succeeded her mentor Katharine Brandegree as the Curator and Head of the Department of Botany at the California Academy of Sciences in 1894, a position she held until her retirement in 1949.

With the death of Charles Sprague Sargent in 1927, McKelvey was appointed



Agave palmeri near Fish Creek, Apache Trail, Arizona, 1929

to Harvard's 'Committee to Visit the Arnold Arboretum' and in 1931 was appointed research associate. McKelvey held both of these positions for the rest of her Arboretum career. She focused on the study of yuccas and plants of the American Southwest and botanized extensively in this area during plant collecting expeditions. The resulting work, *Yuccas of the South Western United States*, was published in two volumes in 1938 and 1947. In 1944, McKelvey started her third and last book: the well-received *Botanical Exploration of the Trans-Mississippi West 1790-1850*,

which was published in 1956.

McKelvey was a successful botanist, well respected author, and foremost authority on lilacs and yuccas, As a Visiting Committee member dedicated to the Arboretum, McKelvey actively opposed the implementation of the Bailey Plan (1945), which diverted Arboretum funds and sought the transfer of Arboretum resources to the Cambridge campus. This became known as the 'Arnold Arboretum Controversy' and played itself out in a divisive court battle during the 1950s and 1960s.

Susan Delano McKelvey died in 1964.

For additional biographical information, consult the article ["A Life Redeemed: Susan Delano McKelvey and the Arnold Arboretum,"](#) by Edmund A. Schofield, which appears in *Arnoldia*, v.47 no.4, Fall 1987, pp.9-23.

## Scope and Content

The McKelvey papers include articles, research papers and notes, correspondence, photographs, maps, and manuscripts. The papers reflect her activities as a member of the Arboretum Visiting committee, a research

associate working with lilacs and yuccas, and a botanical explorer of the Southwestern United States.

Material regarding yuccas was formerly deposited in the Library of the Gray Herbarium in Cambridge and has been integrated into the existing collection.

Item-level description is present for much of the collection which had always been housed at the Arboretum, but the materials from Cambridge were less fully described and may only be described at the folder level. Folder names were often copied from the original folders, and contents of folders were generally kept in their original order, if one was present.

## Arrangement

The Papers of Susan Delano McKelvey (1883-1964), 1900-2005 collection is arranged into 8 series and includes 3 subseries.

- **Series I:** Biographical Material (added by Arboretum staff)
- **Series II:** Correspondence
- **Series III:** Association with the Arnold Arboretum
- **Series IV:** Publications
  - **Subseries IV A:** *The Lilac: A Monograph (Lilac)*
    - Contains the black and white photographs used in *Lilac* (1928).
    - Contains *Lilac* (1928).
    - Contains notes, articles, and correspondence relating to *Lilac*.
  - **Subseries IV B:** *Yuccas of the Southwestern United States (Yuccas)*
    - *Yuccas of the Southwestern United States: Parts One and Two* (1938, 1947), and articles relating to *Yuccas*.
    - *Missouri Botanical Garden: Thirteenth Annual Report*
    - Travel journals and logbooks of photographs taken on plant collecting expeditions, and notes, photos and correspondence relating to *Yuccas* and *Agave*.
  - **Subseries IV C:** *The Botanical Exploration of the Trans-Mississippi West*
    - Maps belonging to McKelvey, used as guides for her plant collecting expeditions, and notes for *Botanical Exploration* (1938).
    - Articles McKelvey used in her research for *Botanical Exploration*.
    - Five notebooks of extensive notes (manuscript of) *Botanical Exploration*
    - Two copies of *Botanical Exploration* (one McKelvey's)
    - *Reports of Explorations and Surveys, to Ascertain the Most Practicable and Economical Route for a Railroad from the Mississippi River to the Pacific Ocean 1835-1856 Vol. XI*
    - Press releases and letters relating to *Botanical Exploration*.
    - Assorted correspondence to librarians, botanical garden directors and others.
- **Series V:** Collected Works
- **Series VI:** Maps

- **Series VII:** Research Materials and Notes
- **Series VIII:** Photographs & Negatives

## Container List

### Series I: Biographical Material

- **Box 1**
- Folder 1: Articles
  - Howard, Richard A. "Sarah Gildersleeve Fife Memorial Award," a biography of Susan D. McKelvey. Annual Report of the Arnold Arboretum, 1957-58.
  - Howard, Richard A. "Susan Delano McKelvey, 1883-1964," an obituary. *Journal of the Arnold Arboretum*, Volume 46, 1965
  - Schofield, Edmund A. "A Life Redeemed: Susan Delano McKelvey and the Arnold Arboretum." *Arnoldia*, Volume 47, Number 4 (Fall 1987), pages 9 to 23.
- Folder 2: Articles
  - "Necklace Causes Gossip," *The New York Times*, 16 September 1900, p.7, col. 5.
  - "Stock Broker Buys Oyster Bay Estate," *The New York Times*, 4 May 1927, p. 43, col. 4.
  - "Gets Reno Divorce from C. W. M'Kelvey," *The New York Times*, 4 March 1930, p. 17, col. 2.
  - "Charles W. M'Kelvey," (obituary) *The New York Times*, 10 January 1957, p. 29, col. 4.
  - Photograph of Portrait of William Adams Delano by Dunbar Beck.
  - Newspaper clipping of December 15, 1929 on the "parting of ways" of the Charles Wylie McKelvey.
  - Newspaper clipping of March 9, 1930 on the divorce of the McKelveys in Reno.
- Folder 3: Obituaries
  - Obituaries of McKelvey, 1964. *N.Y. Times*, *Boston Traveler*, *Boston Herald*, *Boston Globe*.
  - McKelvey notes for her obituary.
- Folder 4: Personal Correspondence, 1949-1964
  - Letters concerning:
  - The disposal of personal library.
  - Donation of painting of Fothergilla to Museum of Fine Arts.



Obituary, *Boston Globe*, July 12, 1964

- Application for photostats of journal.
- Permission for use of journals.
- Reference to use of Geyer correspondence.
- Appeal for information on Mersh.
- Acknowledgment of the trophy bowl.
- Folder 5: Photographs
  - 4 Photographs (six copies each) with negatives of Susan Delano McKelvey from Edmund Schofield's article "A Life Redeemed." *Arnoldia* Vol. 47, No. 4, Fall 1987.
- Folder 6: Genealogical materials, compiled by Edmund Schofield
  - Letter from Ed[mund Schofield] to Sheila Connor, December 22, 2005
  - Genforum thread discussing descendants of Charles and Susan McKelvey, 2002
  - 1920 United States Federal Census
  - 1930 United States Federal Census
  - New York Passenger Lists, 1935
  - Census and other records for Charles McKelvey
  - *A Life Redeemed: Susan Delano McKelvey and the Arnold Arboretum*

## Series II: Correspondence

- **Box 1**
- Folder 1: Schofield collected correspondence

This folder contains copies of McKelvey correspondence assembled by Edmund Schofield from the California Academy of Sciences, Arnold Arboretum (Jamaica Plain), New York Botanical Garden, Harvard University Archives, and the Massachusetts Historical Society in 1986-1987 for his article "A Life Redeemed."

- To Eastwood from McKelvey, 1923-1946
- To McKelvey from Eastwood, 1934-1948
- To Kelsey from McKelvey, 1924-1927
- To William Judd from Oakes Ames, 1930
- To McKelvey from John Hendley Barnhart, 1934
- To E.D. Merrill from McKelvey, 1935-1943
- To McKelvey from Rehder, 1936
- To Mangelsdorf from McKelvey, 1941-1947
- To McKelvey from Mangelsdorf, 1941-1947
- To Whitehill from McKelvey, 1951-1956
- To McKelvey from Whitehill, 1951-1955
- To Anthosen Press from Whitehill, 1954-1956
- To Whitehill from Anthosen Press, 1953-1956
- To Whitehill from Howard, 1955
- Folder 2: Schofield collected correspondence, continued
- Folder 3
  - Fifty-five letters from Oakes Ames to Susan McKelvey, 1927-1949.
  - Six letters from Blanche Ames to Susan McKelvey.
  - Eleven Holiday greeting cards 1940-1949, from Oakes and Blanche Ames.
  - Five plates of economic plants.
    - Two notes on the disposal of Oakes Ames' letters to McKelvey.
  - Articles




- *Oakes Ames' Orchid Herbarium* by Charles Schweinfurth. July, 1950.
- *The Rediscovery of a Lost Orchid*, Oakes Ames. Boston, 1946 Merrymount Press, Boston from the American Orchid Society Bulletin 9 (1939) 29-30.
- *Pollination in Coryanthes*, Oakes Ames. Reprinted from American Orchid Society Bulletin 10 (1941) 146-150. *The Pollinia of Orchids*, Oakes Ames. Reprinted from American Orchid Society Bulletin 13 (1944) 190-194.
- *The Strange Case of Catasetum Barbatum*, Oakes Ames. Reprinted from A.O.S.B. 13 (1945) 289-294.
- *Vanilla*, Oakes Ames. Reprinted from A.O.S.B. 14 (1945) 274-275.
- *The Evolution of the Orchid Flower*, Oakes Ames. Reprinted from A.O.S.B. 14 (1946) 355-360.
- Obituary of Oakes Ames. Harvard Gazette Vol. XLVII, Sat. Feb. 23, 1952, No. 22 (Died April 28, 1950).
- Oakes Ames letters to Susan McKelvey
  - Nov. 28. McKelvey note on letter from Ames: ..."she (a student at the Bussey Institution) though she received a degree her subject matter never got beyond the card stage, while I published *The Lilacs*."
  - June 23. Letter from Ames offering title of Research Assistant.
  - Feb. 29, 1939. Offer of a room in the Botanical Museum "at the end of Room 7."
  - March 9, 1944. Ames suggests to "Susan" that she might find "a wealth of correspondence bearing heavily on the work of our early American botany" at Kew and the British Museum of Natural History.
  - Nov. 15, 1945. Ames "ashamed of my failure to discuss with you the progress of your work on early American botanists."
  - Nov. 23, 1946. "Some American Medical Botanists arrived unexpectedly." Reference to Thomas Nuttall in *Two Years Before the Mast* Vol. 2, p.359.
  - Sept. 30, 1947. Yuccas of the South Western U.S. "arrived."
  - Nov. 19, 1947. "...you have won for yourself a rather lofty place in the botanical field."
  - Nov. 9, 1948. "I suppose I have been so keenly alive to the glory of first hand information that even an Einstein pales when he quotes. Of course quotations from rare works are always acceptable. Yet unless they are enlivened, spiced as it were, with original remarks, they make the average reader wonder why they were not left in the archives."
  - Nov. 27, 1948. "Of course any quotation that possesses quaintness is worth inclusion in a story of early western botanists."
  - The letters so far steer McKelvey through the *Botanical Exploration*.
  - Feb. 6, 1949. Reference to Richard Schultes. "My star student whose life-work I inspired."
  - Feb. 21, 1949. "I think you are honor bound to reveal more of yourself. In the final analysis it is what you have deduced from



your conscientious labors that the serious reader will expect to find spicing the text."

Advertisements in Mrs. Geary May. 1949. No. 3  
March 1949



### Why the Yucca Moth is a model parent

**T**HIS NORTH AMERICAN MOTH, *Toxotropa yuccivora*, which lives on the yucca plant, has a very ingenious method of providing for her offspring.

When time for egg-laying comes, this moth climbs deep into the flower of the yucca plant carrying a mass of pollen gathered from other yuccas.

Afterwards she carefully thrusts more pollen into the flower. By doing this, she makes sure that the plant is fertilized and that the yucca seeds will develop as her eggs are hatched. Regardless of what happens to her, there will be an ample supply of food for the children.

With the yucca moth, this is, of course, purely a matter of instinct. But it is an instance where lowly instinct can often teach a lesson to the human parent.

For, if you will just think about the people you've known, you will probably remember cases where something has happened to the head of the family and the children have been left completely without funds or inadequately provided for.

It is, fortunately, very easy to make certain that this will never happen to your family. All you have to do is call in The Travelers man and go over your insurance policies with him.

You may find that your present insurance is completely adequate and that nothing has been left at loose ends. You may possibly find that you do not have ample protection or that there are details which should be straightened out.

Anyway, you will really enjoy talking with The Travelers man. Traditionally Travelers men are pleasant, unassuming, thorough business men who are experts in insurance.

Moral: Insure in The Travelers. All forms of insurance, The Travelers Insurance Company, The Travelers Indemnity Company, The Travelers Fire Insurance Company, Hartford, Connecticut.

- Feb. 28, 1949 "It occurs to me again and again (and again) that the marvelous abundance of your research should give birth to a racy abridgment, - a book of say 300 pages. Not that the abridgment should stand alone, but that a spicy readable thing would come forth from a wilderness of faithfully garnered facts. What a glorious background for a masterpiece is this thing that you create doubts."
- March 4, 1949. "I still think you have a double proposition to satisfy. You must publish the evidence of your research as a distinctly valuable contribution to botanical history, and then prepare as an historical story a condensed version -- you can make your enterprise substantially scientific in its soul and yet, by a separate treatment, pleasantly popular in its heart."

- July 20, 1949. Letter on nomenclature "...think you have followed a wise course in avoiding the attempt to modernize the botanical names used by your heroes."
- Correspondence with Blanche Ames
  - September 4, 1950. Letter from Blanche Ames to McKelvey
  - May 7, 1950. Letter from Blanche Ames concerning Oakes' death
  - May 27, 1951. Letter from Blanche Ames discussing women as scientists
  - July 24, 1951. Letter from Blanche Ames
  - December 3, 1955. Letter from Blanche Ames concerning Oakes' letter
- Folder 4: Agave
  - Correspondence from Dr. William Trelease
- Folder 5: Identification of new collections

- **Box 2**

- Folder 1: Moths
- Folder 2: Correspondence Regarding Research for *Botanical Exploration of the Trans-Mississippi West, 1937-1946*

Correspondence related to McKelvey's research on early plant exploration including letters regarding Archibald Menzies, Meriweather Lewis, John Bradbury and the Sessé and Mociño expedition.

- Elmer D. Merrill to McKelvey regarding a lilac article for the Horticultural Society. January 29, 1937
- Elmer D. Merrill to McKelvey regarding publication of her Yucca work. November 8, 1943
- James Rehn, the Academy of Natural Sciences of Philadelphia to McKelvey regarding botanical publications. March 31, 1944
- Francis Pennell, the Academy of Natural Sciences of Philadelphia to McKelvey regarding botanical publications. April 4, 1944
- Francis Pennell, the Academy of Natural Sciences of Philadelphia to McKelvey regarding botanical publications. July 13, 1944
- Elmer D. Merrill to McKelvey requesting that she write a history of the Arboretum. September 8, 1944
- John Forsyth, "The Old Fort" Book and Print Store to McKelvey regarding Archibald Menzies. December 14, 1944
- Madge Jenden, Provincial Archives, Victoria, British Columbia to McKelvey regarding Archibald Menzies. December 29, 1944
- John Forsyth, "The Old Fort" Book and Print Store to McKelvey regarding Archibald Menzies. December 29, 1944
- McKelvey to Elmer D. Merrill regarding her Archibald Menzies research. January 5, 1945
- Elmer D. Merrill to A. Exell, British Museum of Natural History regarding McKelvey's Archibald Menzies research. January 12, 1945
  - Elmer D. Merrill to McKelvey regarding Archibald Menzies. June 2, 1945
  - Art Alston, British Museum of Natural History to Elmer D. Merrill regarding Archibald Menzies. March 26, 1945
  - Art Alston, British Museum of Natural History to Elmer D. Merrill regarding Archibald Menzies. March 22, 1945
  - Art Alston, British Museum of Natural History to Elmer D.

- Merrill regarding Archibald Menzies. June 8, 1944
    - Elmer D. Merrill to McKelvey regarding her Archibald Menzies research. April 17, 1945
  - Charles Francis Jenkins to William H. Judd regarding Meriweather Lewis seeds sent to the Woodlands Cemetery, Philadelphia. January 16, 1945
    - Francis Pennell, the Academy of Natural Sciences of Philadelphia to Charles Francis Jenkins regarding the origin of Woodlands seeds. January 19, 1945
    - Edgar Wherry to Charles Francis Jenkins regarding the origin of Woodlands seeds. January 19, 1945
    - John Wister, Landscape Architect to Bill [William H. Judd] regarding the origin of Woodlands seeds. January 17, 1945
    - John Wister, Landscape Architect to Charles Francis Jenkins regarding the origin of Woodlands seeds. January 17, 1945
    - Charles Francis Jenkins to William H. Judd regarding the origin of Woodlands seeds. January 22, 1945
    - R. Thompson, Woodlands Cemetery, Philadelphia to Catherine Miller, Historical Society of Pennsylvania regarding the origin of Woodlands seeds. January 20, 1945
    - John Fogg, Jr., Professor of Botany, University of Pennsylvania to Charles Francis Jenkins regarding the origin of Woodlands seeds. March 16, 1945
  - Edgar Anderson, Missouri Botanical Garden to McKelvey regarding John Bradbury. February 19, 1945
  - Charles Francis Jenkins to William H. Judd regarding Dr. [John?] Fogg's report. March 22, 1945
  - Art Alston, British Museum of Natural History to Elmer D. Merrill regarding Archibald Menzies. May 18, 1945
    - Elmer D. Merrill to McKelvey regarding Savage and Alston correspondence. June 14, 1945
  - S. Savage, Linnean Society of London to Elmer D. Merrill regarding papers read by F. Pursh at the Society. May 24, 1945
  - Elmer D. Merrill to McKelvey regarding [John] Bradbury. July 17, 1945
    - M. Kieraus, Royal Botanic Gardens at Kew to Elmer D. Merrill regarding [John] Bradbury plants in the Herbarium at Liverpool. June 20, 1945
    - John McLean Thompson, Hartley Botanical Libraries, University of Liverpool to Mr. Cotton regarding [John] Bradbury plants in the Herbarium at Liverpool. June 4, 1945
    - John McLean Thompson, Hartley Botanical Libraries, University of Liverpool to Mr. Cotton regarding his report on [John] Bradbury plants in the Herbarium at Liverpool. June 7, 1945
    - Report: Bradbury plants in the Herbarium of Liverpool Museums. John McLean Thompson. June 6, 1945
  - Ferris Greenslet, Houghton Mifflin Company to McKelvey regarding Nuttall. October 22, 1945
  - Paul C. Standley to McKelvey regarding her research on the Sessé and Mociño expedition. November 5, 1946

- H.W. Rickett, The New York Botanical Garden to McKelvey regarding the Sessé and Mociño expedition. November 13, 1946
  - McKelvey to E.H. Smith, Historical Society of the State of Idaho regarding her Nathaniel J. Wyeth research. November 12, 1946
    - Flora Foster, State Historical Museum, Boise, Idaho to McKelvey regarding McKelvey's Nathaniel J. Wyeth research. March 25, 1947
  - H.W. Rickett, The New York Botanical Garden to McKelvey regarding her [John] Bradbury research. November 20, 1946
- Folder 3: Correspondence Regarding Research for *Botanical Exploration of the Trans-Mississippi West*, 1947-1949
  - McKelvey to William Lingelbach, Librarian, American Philosophical Society regarding her Michaux research. February 15, 1947
    - Receipt for reproductions of pages from the *Michaux Journal*. The American Philosophical Society. April 7, 1947
    - William Lingelbach to McKelvey regarding her Michaux research. February 26, 1947
    - Gertrude Hess, Assistant Librarian, American Philosophical Society to McKelvey regarding her Michaux research. February 27, 1947
    - McKelvey to Gertrude Hess regarding her Michaux research. March 4, 1947
    - McKelvey to Gertrude Hess requesting a John Bradbury article. March 29, 1949
    - Gertrude Hess to McKelvey regarding reproductions of pages from the *Michaux Journal*. April 7, 1947
  - A.G. Harvey, Barrister-at-Law to McKelvey regarding David Douglas, botanist. March 22, 1947
    - McKelvey to A.G. Harvey regarding her David Douglas research. March 18, 1947
    - McKelvey to A.G. Harvey regarding her David Douglas research. January 20, 1948
  - List of publications, Oregon Historical Society. c1947
    - *Preserving Oregon's History* brochure, Oregon Historical Society. c1947
    - List of publications, "Northwest Historical Books", Binford & Mort, Portland, Oregon
    - Elise Wolfe, Assistant Secretary, Oregon Historical Society to McKelvey regarding the Society's publications. April 1, 1947
  - A.E. Porsild, Chief Botanist, National Museum of Canada to McKelvey regarding her George Barnston research. April 11, 1947
  - Joseph Ewan, Associate Botanist, Bureau of Plant Industry, United States Department of Agriculture to McKelvey regarding his plant exploration papers. April 15, 1947
  - Willard E. Ireland, Provincial Archives, Victoria, British Columbia to McKelvey regarding her David Douglas and John Jeffrey research. May 28, 1947
  - Clifford P. Wilson, Hudson's Bay Company to McKelvey regarding William Fraser Tolmie article. June 5, 1947
    - Dorothy O. Johansen. "William Fraser Tolmie of the Hudson's Bay Company." *The Beaver*. September, 1937.

- Willard E. Ireland to McKelvey regarding an article on Meredith Gairdner. September 27, 1947
  - Receipt for purchase of article. Provincial Archives, Victoria, British Columbia. September 27, 1947
  - S.W. Geiser, Southern Methodist University to McKelvey regarding his book *Naturalists*. May 8, 1951
  - McKelvey to S.W. Geiser regarding his book *Naturalists*. February 11, 1951
  - McKelvey to S.W. Geiser regarding J.W. Abert and her early plant exploration research. December 31, 1950
  - Willard E. Ireland to McKelvey regarding a Meredith Gairdner article. October 17, 1947
  - Willard E. Ireland to McKelvey regarding "the Menzies' Journal." October 24, 1947
- Leonard Bacon to McKelvey regarding the Portuguese poet Camões. October 24, 1947
  - McKelvey to Leonard Bacon regarding her early plant exploration research. November 2, 1947
  - Leonard Bacon to McKelvey regarding George H. Von Langsdorff. November 3, 1947
  - McKelvey to Leonard Bacon regarding her research. November 9, 1947
  - Leonard Bacon to McKelvey regarding Bristol sea captains. November 10, 1947
  - Leonard Bacon to McKelvey regarding Kennebago and McKelvey's brother Will. September 24, 1953
- McKelvey to A.E. Porsild, Chief Botanist, National Museum of Canada regarding her William Fraser Tolmie research. November 7, 1947
- McKelvey to Dorothy O. Johansen regarding her William Fraser Tolmie article. November 7, 1947
  - Dorothy O. Johansen to McKelvey regarding her William Fraser Tolmie research. November 14, 1947
- A.E. Porsild, Chief Botanist, National Museum of Canada to McKelvey regarding George T. Allen. November 15, 1947
- McKelvey to Clifford P. Wilson, Hudson's Bay Company regarding plant expeditions from Fort Vancouver. January 20, 1948
  - McKelvey to Clifford P. Wilson regarding her research. January 30, 1948
  - Clifford P. Wilson to McKelvey regarding Michel Laframboise. January 26, 1948
- Notes about [Archibald] Menzies. c1948
  - McKelvey to A.H.G. Alston, British Museum regarding "the Menzies journal." January 20, 1948
  - Photographic Service, British Museum to McKelvey regarding photostats. February 5, 1948
  - McKelvey to Photographic Services, British Museum regarding photostats. February 9, 1948
  - Receipt for money order sent to Photographic Services, British Museum. February 11, 1948
  - Receipt for payment to Photographic Services, British Museum. February 16, 1948

- Bill for photostats. Photographic Services, British Museum. March 1, 1948
- McKelvey to A.H.G. Alston regarding billing mistake. March 16, 1948
- J.A. Crabbe, British Museum to McKelvey regarding billing mistake. March 24, 1948
- McKelvey to J.A. Crabbe regarding billing mistake. April 12, 1948
- J.A. Crabbe to McKelvey regarding billing mistake. April 26, 1948
- Bill for photostats. Photographic Services, British Museum. February 24, 1949
- J. Ramsbottom, Keeper of Botany, British Museum to McKelvey regarding billing mistake. March 17, 1949
- Marion Ownbey, Department of Botany, The State College of Washington to McKelvey regarding David Douglas. January 28, 1948
  - McKelvey to Marion Ownbey regarding David Douglas. January 20, 1948
  - Marion Ownbey to McKelvey regarding David Douglas. August 14, 1947
  - Marion Ownbey to McKelvey regarding David Douglas. April 17, 1947
  - Map: "Landforms of the United States" showing Craig Mountains. 1939
- McKelvey to Alice B. Maloney regarding plant expeditions from Fort Vancouver. January 30, 1948
  - Alice B. Maloney to McKelvey regarding John McLeod and plant expeditions from Fort Vancouver. February 3, 1948
  - McKelvey to Alice B. Maloney regarding John McLeod and her William Fraser Tolmie research. February 12, 1948
  - Alice B. Maloney to McKelvey regarding her research. February 15, 1948
- Beatrix Farrand to McKelvey regarding her research, Arboretum news, and more. February 12, 1948
- Willard E. Ireland, Provincial Archives, Victoria, British Columbia to McKelvey regarding the *B.C. Historical Quarterly*. March 3, 1948
- Elise Wolfe, Oregon Historical Society to McKelvey regarding the *Oregon Historical Quarterly*. March 10, 1948
- McKelvey to "Sir", Provincial Archives, Victoria, British Columbia regarding John McLeod. September 16, 1948
  - Willard E. Ireland to McKelvey regarding John McLeod. September 23, 1948
  - Willard E. Ireland to McKelvey regarding John McLeod. September 30, 1948
  - Willard E. Ireland to McKelvey regarding her John McLeod and William Fraser Tolmie research. November 18, 1948
  - McKelvey to Willard E. Ireland regarding John McLeod and William Fraser Tolmie. March 29, 1949
  - Willard E. Ireland to McKelvey regarding photostats she requested. April 6, 1949

- Receipt for photostats. Government of British Columbia. April 19, 1949
- Bill for photostats. Provincial Archives, Victoria, British Columbia. April 6, 1949 (2 copies)
- McKelvey to Willard E. Ireland regarding John McLeod and William Fraser Tolmie. April 21, 1949
- Willard E. Ireland to McKelvey regarding photostats. April 25, 1949
- Willard E. Ireland to McKelvey regarding photostats. November 1, 1954
- McKelvey to Willard E. Ireland regarding photostats. November 4, 1954
- Receipt for photostats. Provincial Archives, Victoria, British Columbia. November 15, 1954
- Customs declaration for photostats. c1954
- Bill for photostats. Provincial Archives, Victoria, British Columbia. November 1, 1954
- Willard E. Ireland to McKelvey regarding John McLeod. January 28, 1955
- "Fur Traders by the Name of John McLeod." Willard E. Ireland. January 27, 1955
- Willard E. Ireland to McKelvey regarding her John McLeod research. February 9, 1955
- Margaret Hackett, Library of the Boston Athenaeum to McKelvey regarding resources for her research. October 22, 1948
- McKelvey to Francis W. Pennell, Curator of Plants, The Academy of Natural Sciences of Philadelphia regarding Pursh, the Lewis and Clark Expedition, and William Gambel. March 15, 1949
  - Francis W. Pennell to McKelvey regarding her William Gambel research. March 23, 1949
  - McKelvey to Francis W. Pennell regarding her William Gambel research. March 28, 1949
  - Map: "Probable route of William Gambel to California, 1841." c1938
  - Francis Harper to McKelvey regarding Dr. Witmer Stone's research on William Gambel. April 20, 1949
  - Francis W. Pennell to McKelvey enclosing memo from Francis Harper. April 26, 1949
  - McKelvey to Francis Harper regarding Dr. Witmer Stone's research on William Gambel. May 26, 1949
  - Francis Harper to McKelvey regarding Dr. Witmer Stone's research on William Gambel and the map of Gambel's probable route to California. June 3, 1949
  - Francis Harper to McKelvey suggesting resources for her William Gambel research. February 28, 1951
- H.W. Rickett, The New York Botanical Garden to McKelvey regarding his [John Bradbury] paper. April 12, 1949
  - Gertrude Hess, Assistant Librarian, American Philosophical Society to McKelvey regarding H.W. Rickett's John Bradbury paper. March 30, 1949
  - McKelvey to H.W. Rickett asking several questions about early plant explorers. March 15, 1949



- H.W. Rickett to McKelvey answering her questions about early plant explorers. March 16, 1949
  - McKelvey to H.W. Rickett thanking him for his help. March 29, 1949
  - H.W. Rickett to McKelvey regarding Friedrich G.J. Luders. April 5, 1949
  - McKelvey to H.W. Rickett requesting biographical data on early plant explorers. January 29, 1951
  - H.W. Rickett to McKelvey regarding early plant explorers. March 14, 1951
  - McKelvey to H.W. Rickett regarding a poem about seed distribution. April 21, 1949
  - H.W. Rickett to McKelvey regarding a poem about seed distribution. April 27, 1949
- Four photographs of *yucca* plants to be identified. c1949
  - Ellen Rooksby, Desert Plant Life Magazine to McKelvey requesting identification of *yucca* plants. June 6, 1949
  - Ellen Rooksby, Desert Plant Life Magazine to McKelvey with photographs and details of *yucca* plants to be identified. June 12, 1949
- Margaret Hackett, Boston Athenaeum to McKelvey suggesting resources for her research. November 17, 1949
- Elizabeth M. Stover, Assistant Editor, Southwest Review to McKelvey regarding S.W. Geiser's articles. December 21, 1949
- Folder 4: Correspondence Regarding Research for *Botanical Exploration of the Trans-Mississippi West*, 1950-1954
  - Joan Kuwitzky, Public Relations Office, Oklahoma City University to McKelvey regarding the journal *Bios*. January 5, 1950
  - Margaret Hackett, Boston Athenaeum to McKelvey regarding Deppe and Lüders. Postmarked January 17, 1950
  - Joseph Ewan, Assistant Professor of Botany, Tulane University regarding "Rocky Mountain Naturalists." September 7, 1950
    - Joseph Ewan to McKelvey suggesting resources for her John Bradbury research. November 14, 1950
  - Lazella Schwarten, Librarian, Arnold Arboretum to McKelvey regarding resources for her research. September 12, 1950
    - Robert Fulton Logan, Curator, Lyman Allyn Museum to McKelvey requesting to borrow Audubon prints for an exhibit. June 9, 1951
    - Joseph Ewan to McKelvey correcting her statement about the seed collector Alexander Gordon. February 21, 1951
  - P. Jovet, Muséum National d'Histoire Naturelle to Lazella Schwarten regarding an manuscript on Auguste Trécul's voyage to the United States. Letter in French. November 11, 1950
    - J. Leandri, Muséum National d'Histoire Naturelle to Lazella Schwarten regarding reproductions of the Trécul manuscript. Letter in French. March 19, 1951
    - J. Leandri to McKelvey enclosing bill for Trécul reproductions. Letter in French. April 5, 1951
    - M. Tardieu to Lazella Schwarten regarding Trécul reproductions. Letter in French. February 24, 1951
    - Bill for Trécul reproductions. Bill in French. March 12, 1951

- Check for payment of Trécul reproductions. April 14, 1951
  - Receipt for payment of Trécul reproductions. April 17, 1951
- Herbert M. Evans, Director, Institute of Experimental Biology, University of California at Berkeley to McKelvey praising her research. January 22, 1951
- Elmer D. Merrill to McKelvey regarding eating rats in the Philippines and his Richard C. McGregor memo. February 5, 1951
  - Memo: Richard C. McGregor. c1951
- McKelvey to Joseph Ewan regarding the details of her book, citations, etc. February 11, 1951
- Margaret Hackett, Boston Athenaeum to McKelvey regarding a reference question. February 27, 1951
  - Lazella Swarten to McKelvey regarding Duhautcilly books. February 26, 1951
- "Rick", The New York Botanical Garden to Lazella Swarten regarding William Bullock. May 4, 1951
- Constance Ashenden, Farlow Reference Library, Harvard University to Lazella Swarten regarding Thomas Drummond's manuscript *Musci Americana*. June 11, 1951
- Reference Department, University of Missouri to Lazella Swarten regarding Lewis and Clark book reviews. January 18, 1952
  - Lazella Swarten to McKelvey regarding Criswell book reviews. January 23, 1952
  - Lazella Swarten to McKelvey regarding bibliographic details. September 10, 1951
  - Lazella Swarten to McKelvey regarding a book borrowed from the Fogg Museum. June 20, 1952
  - Lazella Swarten to McKelvey regarding Stanfield's Plant Collecting in Missouri. c1952
  - Lazella Swarten to McKelvey enclosing the United States Government Printing Office Style Manual. September 9, 1953
  - Lazella Swarten to McKelvey regarding bibliographic details. December 21, 1953
  - Lazella Swarten to McKelvey regarding bibliographic details. April 28, 1950
- Wayne M. Faunce, Assistant Director, The American Museum of Natural History to McKelvey regarding the Prince Maximilian of Wied zoological collection. November 7, 1952
  - McKelvey to Wayne M. Faunce requesting a description of the Prince Maximilian of Wied collection. October 30, 1952
- Sir Edward Salisbury, Director, Royal Botanic Gardens at Kew to Lazella Swarten regarding plant specimens collected by Joseph Burke and Alexander Gordon. December 4, 1952
  - Sir Edward Salisbury to Lazella Swarten listing letters at Kew from Joseph Burke and Alexander Gordon to Sir W. Hooker. December 6, 1950
- McKelvey to the Director of the Department of Biology, Brown University inquiring about plants collected by Stephen Thayer Olney. January 2, 1953
  - J. Walter Wilson, Chairman, Department of Biology, Brown University to McKelvey regarding Stephen Thayer Olney. January 7, 1953

- J. Walter Wilson to McKelvey regarding Stephen Thayer Olney. January 3, 1953
- McKelvey to Francis Harper inquiring about the locations of several plant collections. January 2, 1953
  - Francis Harper to McKelvey responding to her inquiries. January 7, 1953
- McKelvey to the Director of the Department of Botany, Bowdoin College regarding Parker Cleaveland. January 2, 1953
  - Alton H. Gustafson, Professor of Biology, Bowdoin College to McKelvey regarding Parker Cleaveland. January 9, 1953
  - Joseph Ewan, Tulane University to McKelvey providing the locations of several plant collections. January 19, 1953
  - Alton H. Gustafson to McKelvey regarding Parker Cleaveland's plant records. February 24, 1953
- McKelvey to Bradford Washburn, Director, Museum of Science, Boston inquiring about the locations of the Benjamin D. Greene and John Amory Lowell plant collections. January 2, 1953
  - John Patterson, Museum of Science, Boston to McKelvey regarding Benjamin D. Greene's plant collection. January 6, 1953
  - R.O. Earl, Dean, Queen's University, Ontario to McKelvey regarding Professor Lamson. January 12, 1953
  - McKelvey to the Director of the Department of Botany, Queen's University, Ontario inquiring about Professor Lamson. January 2, 1953
- Joseph Ewan to McKelvey regarding her manuscript. March 2, 1953
- A. E. Porsild, Chief Botanist, National Museum of Canada to McKelvey regarding The Lawson Herbarium. April 29, 1953
  - A. E. Porsild to McKelvey thanking her for information about Curtis' plants from Cuba. May 14, 1953
- Robert C. Forget, Art Department, Ginn and Company to Erwin Raisz, Department of Geography, University of Virginia permitting the publication of a map in Raisz's book. October 26, 1953
- Elmer D. Merrill to McKelvey regarding Walton. November 19, 1953
- Erwin Raisz to McKelvey regarding Texas maps. Postcard. October 21, 1953
  - Erwin Raisz to McKelvey wishing her a Happy Thanksgiving. Postcard. November 26, 1953
  - Erwin Raisz to McKelvey regarding Texas maps. Postcard. December 12, 1953
  - Erwin Raisz to McKelvey regarding Texas maps. Postcard. December 9, 1953
  - Valentine's Day postcard. Postcard. February 11, 1954
  - Erwin Raisz to McKelvey regarding Texas maps. Postcard. October 15, 1956
  - Erwin Raisz to McKelvey regarding landforms map. Postcard. October 19, 1956
- [Illegible] to McKelvey regarding Archibald Menzies. December 18, 1953
- McKelvey to S.W. Geiser regarding the location of the Bettina colony. February 5, 1954

- S.W. Geiser to McKelvey regarding the location of the Bettina colony. March 2, 1954
  - Map: Texas settlements. n.d.
  - S.W. Geiser to McKelvey regarding the location of the Bettina colony. March 1, 1954
  - Map: Texas settlements, showing Bettina colony. n.d.
- Richard A. Howard to Allan Nevins requesting permission for McKelvey to quote from *Pathmaker of the West*. February 15, 1954
  - Allan Nevins to Richard A. Howard permitting McKelvey to quote from *Pathmaker of the West*. February 20, 1954
- Bernard DeVoto to Richard A. Howard permitting McKelvey to quote from his *Across the Wide Missouri* and *The Year of Decision*. February 17, 1954
  - Richard A. Howard to Bernard DeVoto requesting permission for McKelvey to quote from his *Across the Wide Missouri* and *The Year of Decision*. February 15, 1954
- August C. Mahr, Department of German, The Ohio State University to Richard A. Howard permitting McKelvey to quote from his "The Visit of the Rurik" article. February 26, 1954
  - Richard A. Howard to August C. Mahr requesting permission for McKelvey to quote from his "The Visit of the Rurik" article. February 23, 1954
- Check for payment of map printing. March 13, 1954
  - Bill for map printing. Spaulding-Moss Company. February 25, 1954
  - Erwin Raisz to McKelvey enclosing bill for map printing. March 6, 1954
- McKelvey to Erwin Raisz regarding maps for her book. March 24, 1954
- Grace Lee Nute to Richard A. Howard permitting McKelvey to quote from her Geyer article. April 29, 1954
  - Richard A. Howard to Grace Lee Nute suggesting journals in which to publish her articles. May 5, 1954
  - McKelvey to Grace Lee Nute inquiring about her Lamare-Picquot research. May 12, 1954
  - Notes about Lamare-Picquot. c1954
  - Grace Lee Nute to McKelvey regarding Lamare-Picquot. May 17, 1954
- Margaret Hackett, Boston Athenaeum to McKelvey regarding a Lamare-Picquot resource. May 19, 1954
- David [Illegible], Audubon Society? to McKelvey regarding an exhibit of botanical studies. Postmarked September 22, 1954
- "Some Information on the Menzies and Jack Collections in the Herbarium, Royal Botanic Garden, Edinburgh. J.M. Cowan. n.d.
- Folder 5: Correspondence Regarding *Botanical Exploration of the Trans-Mississippi West* and Other Writings, 1955-1961
  - P.W. Galleher, The Arthur C. Clark Company publishers, to Richard A. Howard permitting McKelvey to quote from *Pioneer Days in the Early Southwest*. March 4, 1954
    - Richard A. Howard to P.W. Galleher withdrawing application for permission to quote from the company's publications. May 6, 1955

- P.W. Galleher to Richard A. Sax regarding permission to quote from *Pioneer Days in the Early Southwest*. February 2, 1954
- Edgar Anderson, Director, Missouri Botanical Garden to McKelvey offering Dr. Rolla M. Tryon's help with the Sargent biography. April 1, 1955
  - Mrs. Rolla M. Tryon, Missouri Botanical Garden regarding Shaw and Englemann correspondence. April 26, 1955
  - *Missouri Botanical Garden Bulletin*. Vol. 41, No. 3. March, 1953
- Nell Horner, Librarian, Missouri Botanical Garden to McKelvey regarding a biographical sketch of Frederick A. Wislizenus. May 16, 1955
  - Map: counties of Oklahoma, with McKelvey's notes about McNees and Monroe. c1955
- Edgar Anderson to McKelvey regarding "the controversy" and encouraging her to write a Sargent biography. June 6, 1955
  - Edgar Anderson to McKelvey requesting that she write an article about Sargent for the *Missouri Botanical Garden Bulletin*. May 17, 1955
  - Edgar Anderson to McKelvey suggesting possible publishers for her *Botanical Exploration* book. March 9, 1953
  - Edgar Anderson to McKelvey regarding her Geyer research. February 18, 1948
  - Edgar Anderson to McKelvey praising her Arboretum article in the *Alumni Bulletin*. March 21, 1936
- McKelvey to Verne Grant, Rancho Santa Ana Botanic Garden regarding Archibald Menzies. January 21, 1956
  - Verne Grant to McKelvey inquiring about Archibald Menzies. January 17, 1956
- M.A. DeWolfe Howe to McKelvey regarding John D'Wolf. May 7, 1956
  - M.A. DeWolfe Howe to McKelvey regarding Nor'West John's narrative in *Tales of an Old Seaport*. November 17, 1947
  - McKelvey to M.A. DeWolfe Howe regarding Nor'West John [D'Wolf]. November 16, 1947
  - M.A. DeWolfe Howe to McKelvey regarding Nor'West John [D'Wolf]. November 12, 1947
  - McKelvey to M.A. DeWolfe Howe inquiring about Nor'West John [D'Wolf]. November 9, 1947
- S.W. Geiser to McKelvey regarding Nuttall, Max Farrand, and more. May 8, 1956
- Joseph Ewan, Associate Professor of Botany, Tulane University to McKelvey asking her to edit his chronology of French naturalists in the Southeastern United States to 1860. May 10, 1956
  - "French Naturalists in the Southeastern United States to 1860: a Preliminary Chronology of Men and Events." Joseph Ewan. c1956
  - McKelvey to Joseph Ewan regarding his chronology. May 14, 1956
- McKelvey to S.W. Geiser regarding her completed *Botanical Exploration* book. June 8, 1956

- S.W. Geiser to McKelvey reporting H.K. Beyrich's cause of death. May 15, 1956
  - "Dates of George Catlin's Letters, on the Dragoon Expedition, 1834." c1956
- S.W. Geiser to McKelvey differentiating Chester, Missouri from Chester, Illinois. June 20, 1956
- S.W. Geiser to McKelvey praising *Botanical Exploration's* index and updating her on the status of his own book. June 20, 1956
  - Partial map of southern Texas, with S.W. Geiser's notes. c1956
- McKelvey to S.W. Geiser providing comments on Texas maps for his book. June 26, 1956
- S.W. Geiser to McKelvey regarding H.K. Beyrich. July 9, 1956
- S.W. Geiser to McKelvey sending *Field and Laboratory*. August 17, 1956
- S.W. Geiser to McKelvey regarding his H.K. Beyrich research and encouraging her to write about Pacific railroad surveys. September 22, 1956
  - McKelvey to S.W. Geiser soliciting his opinion about her plan to write about Pacific railroad surveys. September 20, 1956
- Mary Isabel Fry, Librarian, Henry E. Huntington Library and Art Gallery to Lazalla Schwarten regarding *Botanical Exploration*. September 23, 1956
- Jean Adams, Acquisitions Department, University of Southern California to Lazella Schwarten regarding *Botanical Exploration*. September 25, 1956
- S.W. Geiser to McKelvey sending *Field and Laboratory* and H.K. Beyrich. October 9, 1956
- S.W. Geiser to McKelvey regarding H.K. Beyrich and requesting research material for his book. November 29, 1956
- Ernest J. Palmer to McKelvey updating her on his family and his activities during retirement. December 31, 1956
- Hope M. Cote, Secretary, Bristol Historical Society to McKelvey regarding Nor'West John D'Wolf. January 9, 1957
  - McKelvey to Sirs, Bristol Historical Society requesting a copy of a drawing showing the home of Nor'West John D'Wolf. December 28, 1956
  - Tavel, Emilie. "Bristol Drawing Recalls Stately Grandeur of 18<sup>th</sup> Century Rhode Island." *The Christian Science Monitor*. February 7, 1957
- R. Kent Beattie to McKelvey sending his article on Joseph Burke and praising *Botanical Exploration*. February 2, 1957
- Munz, Philip A. "Book Review: Botanical Exploration of the Trans-Mississippi West, 1790-1850." *Aliso*. Vol. 4, No. 1, p. 100. April 25, 1958
- McKelvey to Dr. Morgan regarding his lecture of June 14, 1958 and enclosing an article of hers. c1958
- Joseph Ewan to McKelvey regretting not meeting her during his trip to Cambridge. July 26, 1958

- "Report of Identifications." C.V. Morton, Curator, Division of Ferns, Smithsonian Institution, United States National Museum. December 2, 1959
- Joseph Ewan to C.V. Morton regarding plant identifications for McKelvey. January 27, 1961
  - McKelvey to Joseph Ewan and/or C.V. Morton regarding a small collection of dried plants found in Karl Geyer's 1838 journal. c1961
- C.V. Morton to McKelvey regarding plant identifications. January 30, 1961
  - Shipping invoice for Karl Geyer's journal and accompanying plant specimens. April 18, 1960
  - C.V. Morton to McKelvey regarding the return of Karl Geyer's journal. January 3, 1961
  - McKelvey to C.V. Morton confirming their meeting. December 19, 1960
  - C.V. Morton to McKelvey arranging a meeting. December 6, 1960
  - McKelvey to C.V. Morton arranging a meeting. December 9, 1960
  - C.V. Morton to McKelvey regarding Karl Geyer's journal. September 29, 1960
  - C.V. Morton to Lazella Schwarten regarding the Nicollet expedition. July 25, 1960
  - David B. Lellinger, Smithsonian Institution to McKelvey permitting her to borrow Karl Geyer's journal for study. June 20, 1960
  - C.V. Morton to McKelvey suggesting that the plant specimens found with Karl Geyer's journal may not have been collected by him. April 27, 1960
  - C.V. Morton to McKelvey sending her Karl Geyer's journal and accompanying plant specimens. April 19, 1960
  - C.V. Morton to McKelvey regarding details of Karl Geyer's journal. March 18, 1960
  - C.V. Morton to McKelvey announcing the discovery of Karl Geyer's journal, and suggesting it may be of interest to her. March 10, 1960
- Memo to McKelvey regarding the Boston Athenaeum's subscription to Audubon's ornithology in 1830. n.d.
- Notes about an unidentified explorer's journal. n.d.

### **Series III: Association with the Arnold Arboretum**

- **Box 2**

- Folder 1: Assorted pamphlets, AA Controversy
  - "A Visit to the Arnold Arboretum" by W.J. Bean of the Royal Gardens, Kew. Reprinted from the *Bulletin of Miscellaneous Information of the Royal Gardens, Kew*. Oct. 1910.
  - "The Arnold Arboretum: What it is and does," by Charles Sprague Sargent, Director. Reprint from *The Garden Magazine*, Nov. 1917.
  - "Dr. Sargent's Contribution to Forestry in America." *American Forestry*, Vol. 27, 335 Henry S. Graves 1921 (2 copies).
  - "Charles Sprague Sargent," by Ernest H. Wilson, Obituary. *The Harvard Graduate Magazine*, Vol. 35 #140 1927.



- "Discussion of Charles Sargent's will." *The Statist*, Sept. 10, 1927. (Includes handwritten McKelvey note.)
- "President Conant's Commencement Address." Extract from *Harvard Alumni Bulletin*, 1935.
- "Botany and its Applications at Harvard," June 1945. (Handwritten notes by McKelvey) June 1945.
- "Report of the Coordinating Committee on Biological Sciences," 1949 (Handwritten notes by McKelvey).
- "Celebration of 300th Anniversary of Harvard," *Time Magazine*, May 29, 1950.
- "The Arnold Arboretum and the Bailey Plan," May, 1951.
- "Report on the Questions Raised by the Bailey Plan" March 1, 1952
- "The Arnold Arboretum Controversy."
- "Dr. Howard's War," (Richard A. Howard) Clippings from *Science* Aug. 10, 1953
- Howard Vita, 1917-1953.
- "Harvard's View of the Controversy over the Arnold Arboretum," July, 1954. (Copious notes by McKelvey).
- *Harvard Graduate's Magazine*, 1954, reprint of 1918 publication.
- "What is an Arboretum?" John C. Wister. *Bulletin of the Garden Club* Vol. 42 #5 Sept. 1954.
- *Harvard Alumni Bulletin* clippings: New professors.
- List of overseers of Harvard College.
- Comments on activities of McCarthy and the Fifth Amendment.
- Godfrey L. Cabot, article. *Harvard Alumni Bulletin* April 17, 1954.
- "The Raid on the Arnold Arboretum," Peter J. Cascio. Past President American Association of Nurserymen. February, 1955 (Leaflet).
- "A Letter and a Memorandum from a Professor at Harvard to the President of the University," 1956. (Ivan M. Johnson).
- A note from the Association for the Arnold Arboretum. 1957.
- "A Correspondence between a Professor at Harvard and the President of the University." 1956 (Ivan M. Johnston and President Nathan Pusey).
- Statement of the Winterthur Conference on the Arnold Arboretum. 1956 (McKelvey notes on conferees attached).
- Letter from George L. Slate to President Nathan Pusey concerning the conference held at Winterthur, November 1956 which discussed the fate of the Arnold Arboretum. March, 1957.
- "The Arnold Arboretum Controversy: A Question and Answer Review" May, 1958.
- Undated "Oakes Ames: A Biological Sketch," Paul C. Mangelsdorf.
- "The Arnold Arboretum." Full page report in the *Christian Science Monitor*.
- "The Arnold Arboretum Controversy."
- Note on an oak tag scrap written by McKelvey: "So far as I know I possessed the only copy of the contributions (and donors) to the C.S.S. Fund, (it was the property of my brother M. Delano as the main worker on the N.Y. committee), along with many other papers I gave to Mike Farly, but have never been able to retrieve any of them. [N.B. A list of contributions (and donors) to the C.S.S. Fund was received from Henry James and is held in Archives. S.Connor 2007]

- Newspaper clippings: photography of Honorary Degree Recipients; biography of Godfrey Lowell Cabot; biography of Grenville Clark
- Folder 2: Assorted pamphlets, AA Controversy, continued
- **Box 3**
- Folder 1: Visiting Committee
  - 1953 Harvard Corporation statement concerning "communist" faculty members.
  - 1956 Letter from Dr. Charles C. Lund concerning "amazing anonymous notice" relating to Oppenheimer.
  - 1957 Newspaper cuttings concerning Oppenheimer's appointment as William James Lecturer (Boston Herald, 1957).
  - 1959-1960 A.A. Director's Report.
  - 1961-1962 A.A. Director's Report.
  - 1962 May Arnoldia on greenhouses.
  - 1962 Postcard to McKelvey with signatures of A.A. Visiting Committee. [Missing, 2009]
  - 1962 Letter of appointment to Visiting Committee.
  - 1962-1963 Committee Assignment Handbook.
  - 1963 Harvard's acknowledgment of McKelvey's gift of books, photographs and office equipment.
  - News clipping: "State to sue Harvard in Arboretum Battle."
  - Assorted maps of Arboretum.
  - A.A. Handbook.
  - Plants for A.A. greenhouse.
- Folder 2: Report to the Visiting Committee, October 19, 1949.

## **Series IV: Publications**

### **Subseries IV A: *The Lilac: A Monograph***

- **Box 3**
- Folder 1: *Lilac* Correspondence
  - Alphabetical arrangement of correspondence of McKelvey, including but not limited to:
    - To McKelvey from Edgar Anderson (A)
    - To McKelvey from E.H. Wilson (B For British Museum)
    - To C.S. Sargent from T.A. Havemeyer (H)
    - Maps Of Distribution Of *Syringa* In Yugoslavia (M)
    - Photographs (M, P)
    - Survey On The Growing Conditions Of The Lilac In Different Places (Q)
    - Blueprint of the location of the lilacs, Arnold Arboretum (B)
    - *The National Horticultural Magazine* July, 1928
- Folder 2: *Lilac* Correspondence, continued
- Folder 3: *Lilac* Correspondence, continued
- Folder 4: *Lilac* Correspondence, continued
- Folder 5: *Lilac* Correspondence, continued
- **Box 4**
- Folder 1: *Lilac* Correspondence, continued
- Folder 2: Correspondence, the complications of publishing

- "The Complications of Publishing," Letters in reference to problems with using Ridgway's color plates, (1928)
- To Ridgway from McKelvey.
- To McKelvey from Ridgway.
- To McKelvey from A. Hoen & Co., Printers
- To Malcolm Donald from McKelvey
- To McKelvey from Macmillan Co.
- To Macmillan Co. from McKelvey
- To A.B. Hoen from Ridgway
- To Ridgway from A.B. Hoen
- To E. H. Wilson from Ridgway
- To Ridgway from E.H. Wilson
- To T.A. Havemeyer from McKelvey
- To McKelvey from Havemeyer
- "Weinig Bekannte Flieder Wildarten" -- (article) has photographs reprinted from The Lilac without permission.
- Various letters regarding misuses of McKelvey's photographs:
- To McKelvey from Van Der Voet
- To Gartenschonheit from Arnold Arboretum
- To McKelvey from Herrick, Smith, Donald & Farley
- To McKelvey from Wright, *House And Garden*
- To E.H. Wilson from L. Barron, *Garden And Home Builder*
- To McKelvey from *The House Beautiful*
- To E.H. Wilson from *The American Florist*
- To E.H. Wilson from E.L.D. Seymour, *The Florists Exchange*
- To McKelvey from E.M. Sherman
- To E.M. Sherman from McKelvey
- To Macmillan from E.M. Sherman
- To McKelvey from Macmillan
- To E.M. Sherman from Macmillan
- "Bird Haven: What it IS and what it IS NOT", article, one page.
- "How to Recognize the Hybrid Lilacs", by Florence B. Robinson, credits McKelvey's *Lilac*

- 
- 
- 
- McKelvey from Robinson
  - To McKelvey from Herrick, Smith, Donald & Farley
- Folder 3: Correspondence, Bobbink and Atkins
- Folder 4: Macmillan Company
- Folder 5: Advertisements
  - Various advertisements and reviews promoting McKelvey's book
  - Letters to McKelvey from Macmillan
  - "Exhibit of Books by the Members of The Cosmopolitan Club, February 16-28, 1931"
  - Advertisement for *Lilac*
- Folder 6: Articles about & relating to *Lilac*
  - Various notes and articles on *Syringa*
  - Sections of *Arnoldia*
  - V. 8, no. 7: "*Syringa Prestoniae*"
  - V. 19, no. 5: "The Lilacs of New England"
  - V. 19, no. 6-7: "A Booklet on Lilacs from Russia" (2 copies)
  - "May-time is Lilac-time", *Horticulture*, 26: 5, May 1848.
  - Letter from R.T. Gunther to McKelvey, includes "Early British Botanists and Their Gardens"--subscription form and print of John



*Ceanothus sanguineus*

Tradescant the Elder

- Folder 7: Articles, continued
- Folder 8: Translations
  - Various translations of works on *syringa*
- Folder 9: Translations, continued
- **Box 5**

- Folder 1: Catalogs, *Lilac* references
- Folder 2: Catalogs, continued
- **Box 5A**
  - *The Lilac: A Monograph*. New York: MacMillan, 1928. Unbound copy.
- **Box 5B**
  - *The Lilac: A Monograph*. New York: MacMillan, 1928. V1. Interleaved with annotations by Susan D. McKelvey.
- **Box 5C**
  - *The Lilac: A Monograph*. New York: MacMillan, 1928. V2. Interleaved with annotations by Susan D. McKelvey.
- **Box 5D**
  - *The Lilac: A Monograph*. New York: MacMillan, 1928. Signed by Joseph Rock
- **Box 5E**
  - *The Lilac: A Monograph*. New York: MacMillan, 1928.
- **Box 5F**
  - "Uebersicht über die Arten der Gattung *Syringa* L.", Von K. Starcs, Riga. From *Mitteilungen der Deutschen Dendrologischen Gesellschaft*. Nr. 40, 1928.
  - Six copies: "Four Charts of Selected Colors Conforming to Robert Ridgway's Color Standards and Color Nomenclature", accompaniment to *The Lilac* by Susan D. McKelvey.
  - Black and white plates of 171 photographs used in *The Lilac*, with an index to the photographs.

**Subseries IVB:** *Yuccas of the Southwestern United States*

- **Box 5**
- Folder 1: Postcards
  - Two handwritten notes to Mr. Judd from McKelvey
  - Seven postcards addressed to McKelvey picturing *Yuccas* from:
    - Ted and Mabel Rock 1950?
    - Isabel Failer 1954
    - "Lazella" 1956
    - "Mcbride" 1950
    - Eleanor Child 1944
    - M. H. Dolan 1944
  - Four *Yucca* pictures.
  - Eight postcards featuring the *Yucca*
- Folder 2: Correspondence, A-E
- Folder 3: Correspondence, F-J
- Folder 4: Correspondence, K-O
- Folder 5: Correspondence, P-S

- **Box 6**
- Folder

1:



Yucca schottii

Correspondence, T-Z

- Folder 2
  - Diary of Susan D. McKelvey (photocopy), "Trip to Glacier National Park Montana, August - September 1921," annotated.
  - "List of woody plants collected in Glacier National Park, Montana. August and September 1921 and at other localities as indicated". (Typewritten with handwritten notes.)
- Folder 3: Articles
  - "Notes on Yucca," by S. D. McKelvey. Reprinted from *Journal of the Arnold Arboretum*, Vol. XVI, 1935.
  - "Variation in Yucca Whipplei," by Lee Haines. Reprinted from *Madroño*, Vol. VI, no. 2, (April 1941) pages 33-45.
  - "Arctomecon Californicum," by S. D. McKelvey. Reprinted from *The National Horticultural Magazine*, October 1934.
  - "Taxonomic and Cytological Relationships of Yucca and Agave," by S. D. McKelvey and Karl Sax. Reprinted from *Journal of the Arnold Arboretum*, Vol. XI, 1933.

- "A New Agave from Arizona," by S. D. McKelvey. Reprinted from: *Journal of the Arnold Arboretum*: Vol. XXX, 1949.
- "A Verification of the Occurrence of *Yucca whipplei* in Arizona," by S. D. McKelvey. Reprinted from *Journal of the Arnold Arboretum*, Vol. XV, 1934.
- Folder 4: *Y. Louisianensis* Trel.
- Folder 5: Excerpts
- *Yuccas of the Southwestern United States: Part One*, 1938.
- *Yuccas of the Southwestern United States: Part Two*, 1947.

- **Box 7**

- *Yuccas of the Southwestern United States: Part One*, 1938. Bound.
- *Journal of the Arnold Arboretum*: Vol. XIX, no. 4, October 1938: contains mentions of McKelvey and her contributions to the Arnold Arboretum.
- *The Yuccaceae* by William Trelease. McKelvey seems to have looked up every reference. The section headed "Economic Uses" is free of comment McKelvey's handwritten notes include entries on:
  - The meanings of technical terms.
  - Additions to descriptions.
  - Cross references.
  - Observations such as "How can he tell from dried material?"
  - Referring to author's reference to colors.
  - P. 94 Reference to *Belg. Hort.* 1864:110 "This article is merely a translation of K. Koch's article in...P.83 (1862).
- Logbook of photographs taken (1935-1936) (Book 3)

- **Box 8**

- Two logbooks of photographs taken (1929), (1931), and (1935-1936)
- Four red, bound, Travel Journals (1928-1929), (1929-1930), (1932) and (1934) with itineraries, newspaper clippings, notes, collections

- **Box 9**

- Folder 1: *Yucca angustissima*
- Folder 2: *Yucca arizonica*
- Folder 3: *Yucca arkansana*
- Folder 4: *Yucca arkansana*
- Folder 5: *Yucca arkansana* var. *paniculata*
- Folder 6: *Yucca baccata*
- Folder 7: *Yucca baccata*
- Folder 8: *Yucca baccata*
- Folder 9: *Yucca brevifolia*
- Folder 10: *Yucca brevifolia* (photographs)

- **Box 10**

- Folder 1: *Yucca campestris*
- Folder 2: *Yucca carnerosana*
- Folder 3: *Yucca confinis*
- Folder 4: *Yucca constricta*
- Folder 5: *Yucca elata*
- Folder 6: *Yucca faxoniana*



- Folder 7: *Yucca glauca*
- Folder 8: *Yucca glauca* var. *gurneyi*

- **Box 11**

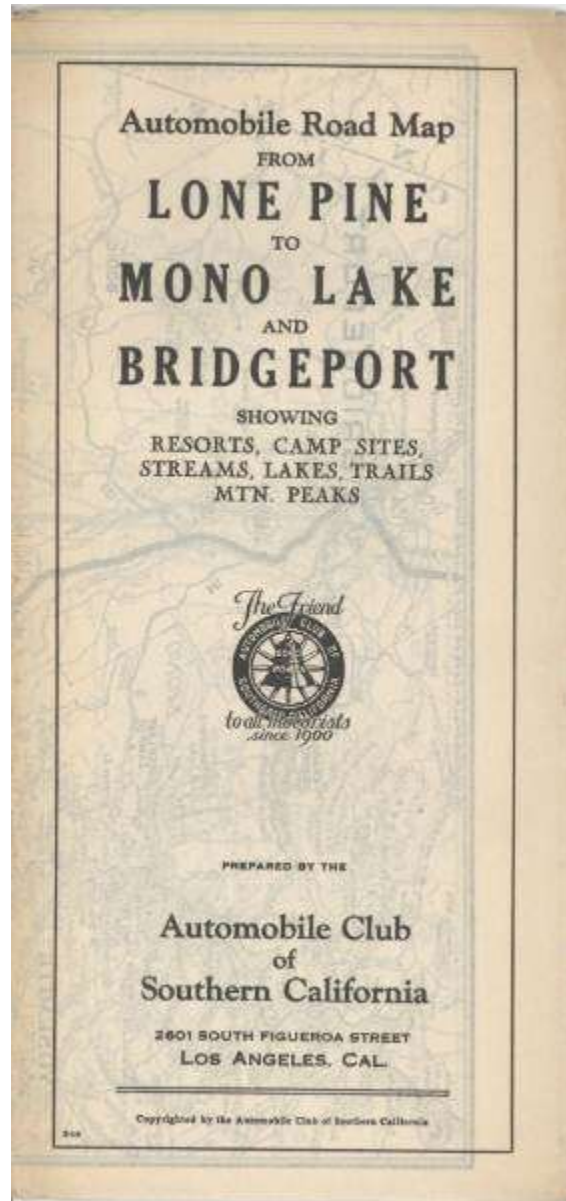
- Folder 1: *Yucca harimaniae*
- Folder 2: *Yucca intermedia*
- Folder 3: *Yucca intermedia* var. *ramose*
- Folder 4: *Yucca kanabensis*
- Folder 5: *Yucca newberryi*
- Folder 6: *Yucca pallida*
- Folder 7: *Yucca peninsularis*
- Folder 8: *Yucca rostrata*
- Folder 9: *Yucca rupicola*
- Folder 10: *Yucca rupicola*
- Folder 11: *Yucca schidigera*

- **Box 12**

- Folder 1: *Yucca schottii*
- Folder 2: *Yucca standleyi*
- Folder 3: *Yucca subrotunda*
- Folder 4: *Yucca thompsoniana*
- Folder 5: *Yucca thornberi*
- Folder 6: *Yucca torreyi*
- Folder 7: *Yucca torreyi*

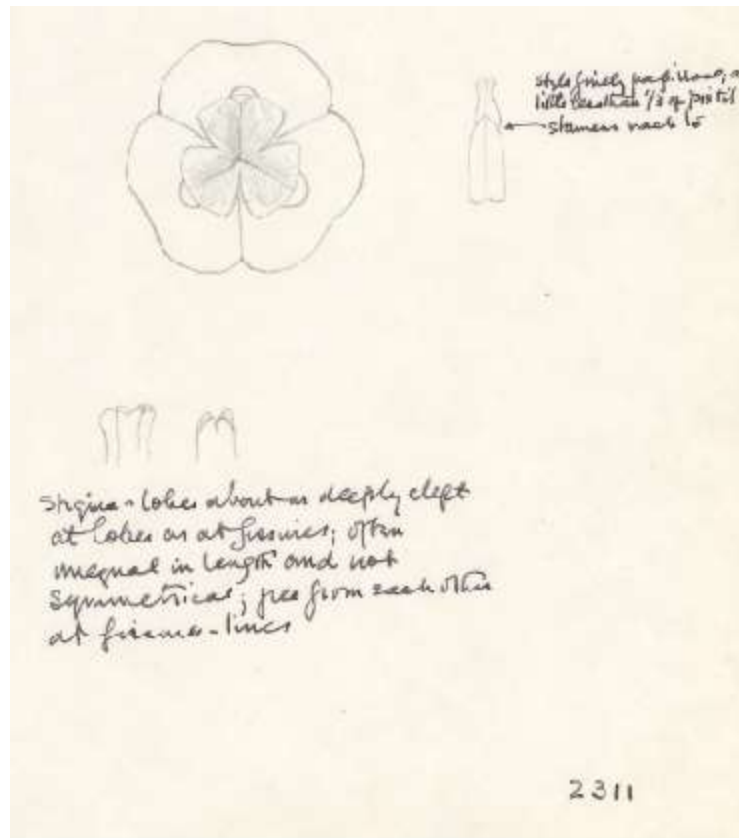
- **Box 13**

- Folder 1: *Yucca treculeana*
- Folder 2: *Yucca treculeana* var. *succulent*
- Folder 3: misc. notes
- Folder 4: *Yucca ? campestris* x *constricta*
- Folder 5: *Yucca ? elata* x *constricta*
- Folder 6: *Yucca constricta* x *arkansana*
- Folder 7: *Yucca constricta* x *rupicola*
- Folder 8: *Yucca pallida* x *arkansana*
- Folder 9: *Yucca ? torreyi* x *carnerosana*
- Folder 10: *Yucca ? torreyi* x *faxoniana*
- Folder 11: *Yucca ? rupicola* x *thompsoniana*
- Folder 12: *Yucca utahensis*
- Folder 13: *Yucca verdiensis*



- **Box 14**
- Folder 1: *Yucca whipplei*
- Folder 2: *Agave Delamateri*
  - "Agave Delamateri and its role in the subsistence patterns of Pre-Columbian Cultures in Arizona". Wendy C. Hodgson and Liz Slauson. Reprinted from *Haseltonia* No. 3, 1995. Discusses SDKs contribution.
- Folder 3: *A. Focconda*
  - Two 5 X 7 photographs, one Agave, one Ruicous(?)
  - Two 3 1/2 X 5 7/8 photographs "Agave found near Ft. Apache Arizona in 1932"--J. Pinckney
  - Hester, notes.
  - *Desert* magazine August 1932, Vol. 4, no. 4
  - *Desert* magazine November 1932, Vol. 4, no. 7
- Folder 4: *Agave Jamaica*
  - Two photographs 8 X 10 (un-identified).
  - Four sets of notes and illustrations (1935)
    - Bet. Kingston and Newcastle
    - Kingston, Jamaica.
    - Sisal- no teeth on leaves.
    - Twickenham Park Farm, United Fruit Company.
- Folder 5: *A. Palmeri*
  - Descriptive notes on *A. Palmeri*
  - Postcard from A.E.
  - Photograph of *A. Palmeri*
- Folder 6: *A. Virginica*
  - Photo taken 1933 of *Agave Virginica*
  - "It's time to visit South Africa," article, *Illustrated London News*, October 8, 1938
  - "The Arizona Cypress and Weeping Juniper" *American Forests and Forest Life*, May 1924, V. 30, no. 365.
- Folder 7: Agaves
  - Eight photographs, 4 1/4 X 5 1/4
  - *Agave maculosa* 1928 (1)
  - *Agave applanata* 1926 (7 of this plant, 3 have a man in the photo, her driver?)
  - One photograph, 3 1/2 X 5 3/4, of *Juniperus pachphlaea* Torr. 1929
  - Two postcards, one blank, with a picture of man, Century plant, one from E.B. Ely?
  - Cartoon from the *New Yorker*, September 2, 1933
  - Clipping from *Time* magazine, September 11, 1933 (about *Agave americana* "century plant")
- Folder 8: Correspondence, Photograph problems
- **Box 15**

- Notes, photos, and a copy of "Arizona Highways, October 1946"
- Folder: 4381, *A. Kaibabeusis*;
- Article "The bend inside the bend" stapled to cardstock
- Folder: *Yucca carnerosana* McKelvey, McKelvey photos, no specimens
- Texas map and accompanying letter glued to cardstock, Southern Pacific Railroad ad stapled to cardstock, *Natural History* (1941) article "A Navaho makes soap" stapled to cardstock
- Folder: *Yucca confinis* McKelvey, McKelvey sketches, 2099
- 8 photos of Yuccas, glued on cardstock



*Yucca standleyi*

- Folder: *Yucca* sp? McKelvey 700
- Folder: Views
- Copy of "Arizona Highways, Christmas 1942" stapled/taped to cardstock; 2 newspaper clippings re: Yuccas glued to cardstock; newspaper clipping of cartoon and envelope of Christmas cards/postcards glued to cardstock; photo of Yucca stapled to cardstock; Huntington Botanical Gardens' Guide to the desert plant collection" taped to cardstock; *Natural History*(1943) "Our desert Yuccas" clipping taped to cardstock; *Christian Science Monitor*(1938) clipping "Desert colors" stapled to cardstock, Desert Flower perfume ad stapled to cardstock

- **Box 16**

- Folder: A. Havardiana, 1957, Texas
- Folder: Y. Arkansana, 2500
- Folder: *Yucca brevifolia* Engelm., McKelvey 1660, sketches [sic]
- Folder: *Yucca brevifolia* Engelm., McKelvey photos, no specimens, Arizona
- Folder: *Yucca brevifolia* Engelm., miscel. Photos (not McKelvey)
- Folder: *Yucca brevifolia* Engelm., letters, literature, etc.
- Folder: *Yucca brevifolia* var. *Jaegeriana* McKelvey, literature, letters, etc,
- Folder: *Yucca brevifolia* var. *Jaegeriana* McKelvey, miscel. photos, not McKelvey
- Folder: *Yucca brevifolia* var. *Jaegeriana* McKelvey, McKelvey photos, no specimens, Utah
- Folder: *Yucca brevifolia* var. *Jaegeriana* McKelvey, McKelvey photos, no specimens, Nevada
- Folder: *Yucca brevifolia* var. *Jaegeriana* McKelvey, McKelvey photos, type locality

- **Box 17**

- Yucca photograph and a series of Yucca sketches
- Folder: Canada; *Yucca intermedia*, 2357
- Folder: *Yucca schidigera* Roezl, miscel. photos, not McKelvey
- Folder: *Yucca thompsoniana*, 1962
- Folder: *Yucca torreyi*, Shafer, herbarium specimens
- Folder: *Yucca treculeana* Carr., literature, etc.
- 1 loose photo and 5 photos of Yuccas glued to cardstock
- Folder: *Yucca whipplei*, miscellaneous



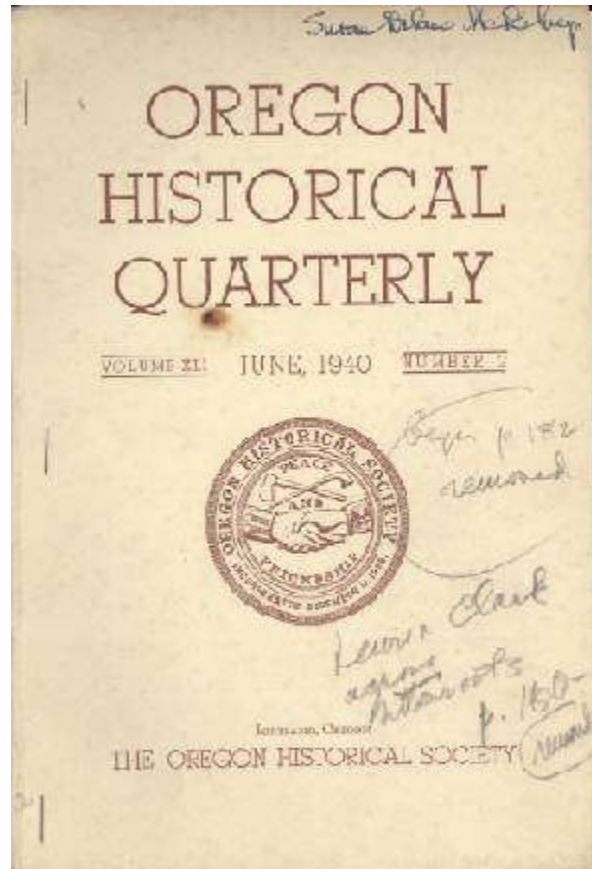
*Yucca Schottii* Engelm.

- Folder: possible hybrid of *Yucca rupicola* X *Yucca thompsoniana*, 1908
- New York World's Fair print, sketches, Yucca images clipped from a book, 4 photos and 3 brief clippings glued to cardstock, a letter and accompanying photo stapled to cardstock, clipping "The Gila wilderness" stapled to cardstock, clipping "The big bend of the Rio" stapled to cardstock, envelope with 2 photos, envelope with loose correspondence glued to cardstock

**Subseries IVC: *The Botanical Exploration of the Trans-Mississippi West***

- **Box 18**
  - Folder 1: Maps, routes followed on travels
  - Folder 2: Geologic map of Arizona
  - Folder 3: McKinley's Desk Outline Maps, annotated. Apparently used as notes for *Botanical Exploration*.
  - Folder 4: Automobile Club of Southern California maps
  - Folder 5: Automobile Club of Southern California maps, continued
  - Folder 6: Automobile Club of Southern California maps, continued
- **Box 19**
  - Folder 1: Automobile Club of Southern California maps, continued
  - Folder 2: Automobile Club of Southern California maps, continued
  - Folder 3: Pacific Railroad reports
  - Folder 4: 1850-1860
    - Notes, "Wallace, Edward S. The great reconnaissance"
    - 1849-1856 "United States and Mexican Boundary Surveys"
    - Other edited writings
    - "The Bear - Poppies" (article) by Rupert C. Barneby.
  - Folder 5: *The Washington Historical Quarterly*
    - *The Washington Historical Quarterly*, Vol. I, no. 1 October 1906. "Documents-- First Attempt to Ascend Mt. Rainier" (underlined)
    - *The Washington Historical Quarterly*, Vol. III, no. 3 July 1912. "Documents--Journal of William Fraser Tolmie" (underlined)
    - *The Washington Historical Quarterly* Vol. XXI, no. 3 July 1930. "Documents--Our First Official Horticulturist-- The Brackenridge Journal".
    - *The Washington Historical Quarterly* Vol. XXI, no. 4, October 1930. "Documents--Our First Official Horticulturist-- The Brackenridge Journal".
    - *The Washington Historical Quarterly* Vol. XXII, no. 1 January 1931. "Documents--Our First Official Horticulturist-- The Brackenridge Journal".
    - *The Washington Historical Quarterly* Vol. XXII, no. 2 April 1931. "Documents--Our First Official Horticulturist-- The Brackenridge Journal".
    - *The Washington Historical Quarterly* Vol. XXII, no. 3 July 1931. "Documents--Our First Official Horticulturist-- The Brackenridge Journal".
    - *The Washington Historical Quarterly* Vol. XXIII, no. 3 July 1932. "Documents-- Diary of Doctor W. F. Tolmie" (underlined)
  - Folder 6: *The Washington Historical Quarterly*, continued

- Folder 7: *Oregon Historical Quarterly*
  - *Oregon Historical Quarterly*. Vol. XL, no. 2 June, 1939 (cover and table of contents only).
  - *Oregon Historical Quarterly*. Vol. XLI, no. 2 June, 1940 (cover and table of contents only).
  - *Oregon Historical Quarterly*. Vol. XLII, no. 1 March, 1941. Contains: "Rendezvous Period of the American Fur Trade", by Carl P. Russell (checked off)
  - *Oregon Historical Quarterly*. Vol. XLII, no. 2 June, 1941 (cover and table of contents only).
  - *Oregon Historical Quarterly*. Vol. XLII, no. 4 December, 1941 (cover and table of contents only).
  - *Oregon Historical Quarterly*. Vol. XXXIV, no. 4 December 1933. Contains: "William Johnson", by Henry E. Reed.; and "Scientists in Early Oregon", by B. A. Thaxter.
- Folder 8: *The Quarterly of the Oregon Historical Society*
  - *The Quarterly of the Oregon Historical Society*. Vol. V, no. 1, March 1904.
  - *The Quarterly of the Oregon Historical Society*. Vol. V, no. 2, June 1904. Contains: "Beginnings of Oregon Exploration and Early Settlement at the Mouth of the Columbia River", by H. W. Scott.
  - *The Quarterly of the Oregon Historical Society*. Vol. V, no. 3, September 1904. Contains: "Botanists of the Oregon Country", by Ansel F. Hemenway and "Literary Remains of David Douglas, Botanist of the Oregon Country- I".
  - *The Quarterly of the Oregon Historical Society*. Vol. V, no. 4, December 1904. Contains: "Sketch of a Journey to Northwestern Parts of the Continent of North America during the Years 1824 '25 '26 '27 - II" by David Douglas, F.L.S.
  - *The Quarterly of the Oregon Historical Society*. Vol. VI, no. 1, March 1905. Contains: "The Higher Significance in the Lewis and Clark Exploration" by F. G. Young and "The Story of Lewis and Clark's Journals" by Reuben Gold Thwaites, L.L.D. and David Douglas's "Sketch of a Journey pt. III".



- *The Quarterly of the Oregon Historical Society*. Vol. VI, no. 2, June 1905. Contains: "Dr. John Scouler's Journal of a Voyage to Northwest America" and "Sketch of a Journey pt. IV".
- *The Quarterly of the Oregon Historical Society*. Vol. VI, no. 3, September 1905. Contains: "Dr. John Scouler's Journal of a Voyage to Northwest America - III" and "Second Journey to the Northwestern Parts of the Continent of North America, 1829 '30 '31 '32 '33 '34 - V" by David Douglas.
- *The Quarterly of the Oregon Historical Society*. Vol. VI, no. 4, December 1905. Contains: "Meriweather Lewis" by Andrew T. Lewis and "Sketch of a Second Journey to the Northwestern Parts of the Continent of North America, and to the Sandwich Islands, During the Years 1829 '30 '31 '32 '33 '34" by David Douglas.
- Folder 9: *The Quarterly of the Oregon Historical Society*, continued
- Folder 10: *The British Columbia Historical Quarterly*
  - *The British Columbia Historical Quarterly*. October, 1940. Contains: "David Douglas in British Columbia", by A. G. Harvey.
  - *The British Columbia Historical Quarterly*. January, 1945. Contains: "The Royal Navy on the Northwest Coast, 1813-1850. Pt. 1" by Longstaff and Lamb.
  - *The British Columbia Historical Quarterly*. April, 1945. Contains: "The Royal Navy on the Northwest Coast, 1813-1850. Pt. 2" by Longstaff and Lamb.
  - *The British Columbia Historical Quarterly*. October, 1946. Contains review on Hubert Howe Bancroft, Historian of the West, by Lamb; and "John Jeffrey: Botanical Explorer."
- **Box 20**
- Folder 1: *Leaflets of Western Botany*
  - *Leaflets of Western Botany*. Vol. II, nos. 2, 4-10, 1938-1939.
  - *Leaflets of Western Botany*. Vol. III, no. 7, July 21, 1942.
  - *Leaflets of Western Botany*. Vol. IV, no. 2, April 28, 1944.
  - --all issues of *Leaflets...* have markings designating the articles of importance to McKelvey
- Folder 2: *Leaflets of Western Botany*, continued
- Folder 3: *The Russians in California*; San Francisco: California Historical Society, 1933.
- Folder 4: *The Visit of the "Rurik" to San Francisco in 1816*, by August C. Mahr. Stanford University Press, 1932. --has bookplate of Alice Eastwood, McKelvey's name written on cover.
- Folder 5: *Sources of the History of Oregon, Vol. I*, pts. 3-6. Eugene, Oregon: University Press, 1899.
- Folder 6: Further articles
  - *Quarterly of the California Historical Society* Vol. XII, no. 4. "Cordia Memoirs".
  - *Proceedings of the American Philosophical Society*. Vol. 94, no. 1 February 27, 1950.
  - *Southwest Review*. Vol. 17, no. 4, Summer 1932. Contains: "Ferdinand von Roemer: Naturalist of the Early Southwest" by Samuel Wood Geiser.
  - *Southwest Review*. Vol. 18, no. 4, Summer 1933. Contains: "Berlandier in Texas" by Samuel Wood Geiser.



- "Flower Color Detector: a Way to Identify and Name Flower Colors", 1953. *Four page color guide adapted from the Wanscher Flower Color Chart by the American Horticultural Council, Inc.*
- *The Home Gardener's Pronouncing Dictionary*. Compiled for Better Homes and Gardens by Alfred Carl Hottes. Des Moines: Meredith Publishing Co., 1937.
- Folder 7: Botanists West of the Mississippi, A-I
- **Box 21**
- Folder 1: Botanists West of the Mississippi, J-Z
- Folder 2: Botanists East of the Mississippi, A-L
- Folder 3: Botanists East of the Mississippi, M-Z
- Folder 4: Botanists, Europe
- Folder 5: Explorations
- Folder 6: List of explorations
- Folder 7: Explorations by sea
- Folder 8: Western U.S., 1800-1832
- Folder 9: Western U.S., 1832-1844
- Folder 10: Western U.S., 1843-1852
- Folder 11: Regions, New England through Other Southern
- Folder 12: Regions, Great Lakes through Mexico/Lower California
- Folder 13: Notes
- **Box 21A**
- *Botanical Exploration of the Trans-Mississippi West, 1790-1850*, Susan D. McKelvey, 1955.
- **Box 21B**
- *Botanical Exploration of the Trans-Mississippi West, 1790-1850*, Susan D. McKelvey, 1955. (McKelvey's second personal copy, with annotations on "...typographical errors, additions, omissions, etc.")
- **Box 21C**
- Botany. Pacific Railroad Survey. v.1 text, v.2 plates.

Contents v.1:

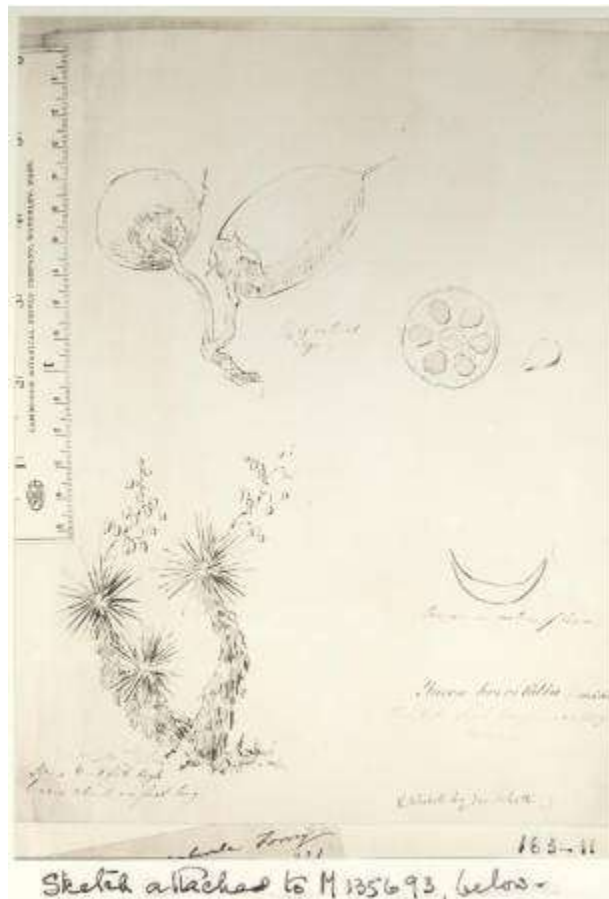
- General description of the botanical character of the country by J.M. Bigelow.
- Description of forest trees by J.M. Bigelow.
- Description of the Cactaceae by G. Engelmann and J.M. Bigelow.
- Description of the general botanical collections by John Torrey.
- Report upon the botany of the route, by J.S. Newberry.
- Chapter II. Descriptions of the forest tress of northern California and Oregon [1857 Newberry?].
- Report upon the botany of the route by J.G. Cooper.
- Catalogue of plants collected east of the Rocky Mountains by Professor Asa Gray.
- Catalogue of plants collected in Washington Territory by J.G. Cooper.
- Description of the mosses and liverworts by W. S. Sullivant.
- Botanical report by John Torrey and Asa Gray upon the collections made by Captain Gunnison ... and Lieutenant E. G. Beckwith.
  - Pt. 1. Plants Collected by Mr. James A. Snyder under the Direction of Lieutenant E. G. Beckwith.
  - Pt. 2. Plants collected by Mr. F. Creutzfeldt under the direction of Captain W. J. Gunnison.

- Botanical report. Catalogue of the plants collected on the expedition by John Torrey and Asa Gray.
- Botanical Report by Elias Durand and T. C. Hilgard. Routes in California to connect with the routes near the thirty-fifth and thirty-second parallels, explored by Lieut. R.S. Williamson.
- Descriptions of plants collected along the route by W.P. Blake and at the mouth of the Gila by John Torrey.
- List and description of the plants collected by John Torrey.
- Synoptical tables of botanical localities by Thomas Antisell.
- General catalogue of the plants collected on the expedition by J. S. Newberry.

Contents v.2:

NOTE: McKelvey's handwritten notations listed inside [square brackets].

- *Crossosoma Californica*. U.S.P.R.R. Ex & Surveys, 35<sup>th</sup> Parallel. Botany, Plate 1.
- *Argemone Munita*. U.S.P.R.R. Ex & Surveys, California. Botany, Plate 2.
- *Selenia Dissecta*. U.S.P.R.R. Ex & Surveys, 32nd Parallel. Botany, Plate 3.
- *Viola Beckwithii*. U.S.P.R.R. Ex & Surveys, 38<sup>th</sup> & 39<sup>th</sup> & 41st Parallel. Botany, Plate 4.
- *Viola Sheltonii*. U.S.P.R.R. Ex & Surveys, 36th Parallel. Botany, Plate II [5].
- *Sidalcea Candida*. U.S.P.R.R. Ex & Surveys, 38<sup>th</sup> & 39<sup>th</sup> & 41st Parallel. Botany, Plate II [6].
- *Malvastrum Marrubioides*. U.S.P.R.R. Ex & Surveys, California. Botany, Plate II [7].
- *Fagonia Californica*. U.S.P.R.R. Ex & Surveys, California. Botany, Plate I [8].
- *Thamnosma Montanum*. U.S.P.R.R. Ex & Surveys, 35<sup>th</sup> Parallel. Botany, Plate III [9].
- *Janusia Gracilis*. U.S.P.R.R. Ex & Surveys, 32nd Parallel & California. Botany, Plate I [10].
- *Styphonia Serrata*. U.S.P.R.R. Ex & Surveys, 32nd Parallel & California. Botany, Plate II [11].
- *Olneya Tesota*. U.S.P.R.R. Ex & Surveys, 32nd Parallel & California. Botany, Plate V [12].



Sketch attached to M 135693, below -  
Yucca schottii Engelmann

- *Hosackia Puberula*. U.S.P.R.R. Ex & Surveys, 32nd Parallel & California. Botany, Plate IV [13].
- *Hosackia Heermanni*. U.S.P.R.R. Exp. & Surveys, California. Botany, Plate [X]IV [14].
- *Hosackia Lathyroides*. U.S.P.R.R. Exp. & Surveys, California. Botany, Plate III [15].
- *Hosackia Incana*. U.S.P.R.R. Ex & Surveys, 36th Parallel. Botany, Plate [X]V[I] [16].
- *Astragalus Filifolius* and *Astragalus Bisulcatus*. U.S.P.R.R. Exp. & Surveys, 47<sup>th</sup> & 49<sup>th</sup> Parallels. Botany, Plate I [17].
- *Astragalus (Homalobus) Serotinus*. U.S.P.R.R. Exp. & Surveys, 47<sup>th</sup> & 49<sup>th</sup> Parallels. Botany, Plate V [18].
- *Astragalus Beckwithii*. U.S.P.R.R. Ex. & Surveys, 38<sup>th</sup> & 39<sup>th</sup> & 41st Parallel. Botany, Plate III [19].
- *Dalea Spinosa*. U.S.P.R.R. Ex. & Surveys, 32nd Parallel & California. Botany, Plate III [20].
- *Dalea Emoryi*. U.S.P.R.R. Ex. & Surveys, California. Botany, Plate II [21].
- *Cercidium Floridum*. U.S.P.R.R. Ex. & Surveys, California. Botany, Plate III [22].
- *Orobus Littoralis*. U.S.P.R.R. Exp. & Surveys, 47<sup>th</sup> & 49<sup>th</sup> Parallels. Botany, Plate VI [23].
- *Strombocarpa Pubescens*. U.S.P.R.R. Ex. & Surveys, California. Botany, Plate VI [24].
- *Ivesia Gracilis*. U.S.P.R.R. Exp. & Surveys, California & Oregon. Botany, Plate XI [25].
- *Horkelia Tridentata*. U.S.P.R.R. Ex. & Surveys, 35th Parallel. Botany, Plate VI [26].
- *Spiræa Millefolim*. U.S.P.R.R. Ex. & Surveys, 36th Parallel. Botany, Plate V [27].
- *Whiplæa Modesta*. U.S.P.R.R. Ex. & Surveys, 36th Parallel. Botany, Plate VII [28].
- *Ænothera Tanacetifolia*. U.S.P.R.R. Ex. & Surveys, 38th & 39<sup>th</sup> Parallels. Botany, Plate IV [29].
- *Ænothera Williamsoni*. U.S.P.R.R. Exp. & Surveys, California. Botany, Plate V [30].
- *Musenium Divaricatum*. U.S.P.R.R. Exp. & Surveys, 47<sup>th</sup> & 49<sup>th</sup> Parallels. Botany, Plate II [31].
- *Cornus Sessilis*. U.S.P.R.R. Ex. & Surveys, 35th Parallel. Botany, Plate VIII [32].
- *Hofmeisteria Pluriseta*. U.S.P.R.R. Ex. & Surveys, 35<sup>th</sup> Parallel. Botany, Plate IX [33].
- *Eremiastrium Belliodes*. U.S.P.R.R. Ex. & Surveys, California. Botany, Plate VI [34].
- *Aplopappus Sphærocephalus*. U.S.P.R.R. Ex. & Surveys, 32<sup>nd</sup> Parallel & California. Botany, Plate VI [35].
- *Linosyris Bigelovii*. U.S.P.R.R. Ex. & Surveys, 35<sup>th</sup> Parallel. Botany, Plate XII [36].
- *Linosyris Ceruminosa*. U.S.P.R.R. Exp. & Surveys, California. Botany, Plate VI [37].
- *Linosyris Teretifolia*. U.S.P.R.R. Exp. & Surveys, California. Botany, Plate VII [38].
- *Calmmandra Candida*. U.S.P.R.R. Ex. & Surveys, 32<sup>nd</sup> Parallel. Botany, Plate II [39].

- *Filaginopsis Multicaulis*. U.S.P.R.R. Ex. & Surveys, 32<sup>nd</sup> Parallel. Botany, Plate III [40].
- *Aster Bigelovii*. U.S.P.R.R. Ex. & Surveys, 35<sup>th</sup> Parallel. Botany, Plate X [41].
- *Stylocline Gnaphaloides*. U.S.P.R.R. Ex. & Surveys, 36<sup>th</sup> Parallel. Botany, Plate XIII [42].
- *Aphantochæte Exilis* and *Evax Caulescens*. U.S.P.R.R. Ex. & Surveys, 36<sup>th</sup> Parallel. Botany, Plate X [43].
- *Layia Pentachæta*. U.S.P.R.R. Ex. & Surveys, 36<sup>th</sup> Parallel. Botany, Plate XVI [44].
- *Hulsea Nana*. U.S.P.R.R. Exp. & Surveys, California & Oregon. Botany, Plate XIII [45].
- *Syntrichopappus Fremontii*. U.S.P.R.R. Ex. & Surveys, 35<sup>th</sup> Parallel. Botany, Plate XV [46].
- *Trichoptilium Incisum*. U.S.P.R.R. Ex. & Surveys, California. Botany, Plate V [47].
- *Tetradymia Glabrata*. U.S.P.R.R. Ex. & Surveys, 38<sup>th</sup> & 39<sup>th</sup> & 41<sup>st</sup> Parallel. Botany, Plate V [48].
- *Calais Cyclocarpha*. U.S.P.R.R. Ex. & Surveys, 35<sup>th</sup> Parallel. Botany, Plate XVIII [49].
- *Calais Bigelovii* and *Calais Tenella*. U.S.P.R.R. Ex. & Surveys, 35<sup>th</sup> Parallel. Botany, Plate XVII [50].
- *Hemitomes Congestum*. U.S.P.R.R. Exp. & Surveys, California & Oregon. Botany, Plate XII [51].
- *Erythræa Tricantha*. U.S.P.R.R. Exp. & Surveys, California. Botany, Plate IX [52].
- *Gentiana Simplex*. U.S.P.R.R. Exp. & Surveys, California & Oregon. Botany, Plate XVI [53].
- *Phlox Canescens*. U.S.P.R.R. Ex. & Surveys, 38<sup>th</sup> & 39<sup>th</sup> & 41<sup>st</sup> Parallel. Botany, Plate VI [54].
- *Gilia Gunnis Onii*. U.S.P.R.R. Ex. & Surveys, 38<sup>th</sup> & 39<sup>th</sup> & 41<sup>st</sup> Parallel. Botany, Plate IX [55].
- *Phacelia Humilis*. U.S.P.R.R. Ex. & Surveys, 38<sup>th</sup> & 39<sup>th</sup> & 41<sup>st</sup> Parallel. Botany, Plate VII [56].
- *Phacelia Popei*. U.S.P.R.R. Exp. & Surveys, 32<sup>nd</sup> Parallel. Botany, Plate X [57].
- *Emmenanthe Parviflora*. U.S.P.R.R. Exp. & Surveys, California & Oregon. Botany, Plate XV [58].
- *Ptilocalyx Greggii*. U.S.P.R.R. Ex. & Surveys, 32<sup>nd</sup> Parallel. Botany, Plate VIII [59].
- *Eddyia Hispidissima*. U.S.P.R.R. Ex. & Surveys, 32<sup>nd</sup> Parallel. Botany, Plate IX [60].
- *Stenandrium Barbatum*. U.S.P.R.R. Ex. & Surveys, 32<sup>nd</sup> Parallel. Botany, Plate IV [61].
- *Antirrhinum Coulterianum*. U.S.P.R.R. Exp. & Surveys, California. Botany, Plate XI [62].
- *Antirrhinum Cornutum*. U.S.P.R.R. Exp. & Surveys, California. Botany, Plate X [63].
- *Pentstemon Heterandrum*. U.S.P.R.R. Ex. & Surveys, 38<sup>th</sup> & 39<sup>th</sup> & 41<sup>st</sup> Parallel. Botany, Plate VIII [64].
- *Pentstemon Fendleri*. U.S.P.R.R. Ex. & Surveys, 32<sup>nd</sup> Parallel. Botany, Plate V [65].
- *Pentstemon Newberryi*. U.S.P.R.R. Exp. & Surveys, California & Oregon. Botany, Plate XIV [66].

- *Mimulus Exilis*. U.S.P.R.R. Exp. & Surveys, California. Botany, Plate XII [67].
- *Castelleia Cadens*. U.S.P.R.R. Exp. & Surveys, California. Botany, Plate XIII [68].
- *Salviastrum Texanum*. U.S.P.R.R. Ex. & Surveys, 32<sup>nd</sup> Parallel. Botany, Plate VI [69].
- *Stegnocarpus Canescens*. U.S.P.R.R. Ex. & Surveys, 32<sup>nd</sup> Parallel. Botany, Plate VII [70].
- *Asclepias Subulata*. U.S.P.R.R. Ex. & Surveys, California. Botany, Plate VII [71].



*Ceanothus velutinus*

- [79].
- *Eriogonum Plumatella*. U.S.P.R.R. Exp. & Surveys, California. Botany, Plate XVI [80].
- *Eriogonum Lachnogynum*. U.S.P.R.R. Ex. & Surveys, 36<sup>th</sup> Parallel. Botany, Plate XIX [81].

- *Asclepias Macrophylla*. U.S.P.R.R. Exp. & Surveys, California. Botany, Plate VIII [72].
- *Mendora Scarra*. U.S.P.R.R. Ex. & Surveys, 32<sup>nd</sup> Parallel & California. Botany, Plate VII [73].
- *Abronia Fragrans*. U.S.P.R.R. Ex. & Surveys, 38<sup>th</sup> & 39<sup>th</sup> & 41<sup>st</sup> Parallel. Botany, Plate X [74].
- *Endolepis Suckleyi*. U.S.P.R.R. Exp. & Surveys, 47<sup>th</sup> & 49<sup>th</sup> Parallels. Botany, Plate III [75].
- *Obione Hymenelytra*. U.S.P.R.R. Ex. & Surveys, 36<sup>th</sup> Parallel. Botany, Plate XX [76].
- *Obione Suckleyana*. U.S.P.R.R. Exp. & Surveys, 47<sup>th</sup> & 49<sup>th</sup> Parallels. Botany, Plate IV [77].
- *Obione Bracteosa*. U.S.P.R.R. Exp. & Surveys, California. Botany, Plate XIV [78].
- *Eriogonum Heermanni*. U.S.P.R.R. Exp. & Surveys, California. Botany, Plate XVII

- *Eriogonum Roseum*. U.S.P.R.R. Expl. & Surveys, California. Botany, Plate XV [82].
- *Centrostegia Thurberi*. U.S.P.R.R. Ex. & Surveys, 32<sup>nd</sup> Parallel & California. Botany, Plate VIII [83].
- *Chorizanthe Fimriata*. U.S.P.R.R. Ex. & Surveys, California. Botany, Plate VIII [84].
- *Euphorbia Ocellata*. U.S.P.R.R. Expl. & Surveys, California. Botany, Plate XVIII [85].
- *Quercus Crassipocula*. U.S.P.R.R. Ex. & Surveys, California. Botany, Plate IX [86].
- *Quercus Echinacea*. U.S.P.R.R. Ex. & Surveys, 35<sup>th</sup> Parallel. Botany, Plate XIV [87].
- *Alisma Californica*. U.S.P.R.R. Ex. & Surveys, 36<sup>th</sup> Parallel. Botany, Plate XXI [88].
- *Corallorhiza Macræi*. U.S.P.R.R. Ex. & Surveys, 35<sup>th</sup> Parallel. Botany, Plate XXV [89].
- *Scoliopus Bigelovii*. U.S.P.R.R. Ex. & Surveys, 35<sup>th</sup> Parallel. Botany, Plate XXII [90].
- *Stropholirion Californicum*. U.S.P.R.R. Ex. & Surveys, 35<sup>th</sup> Parallel. Botany, Plate XXIII [91].
- *Odontostomum Hartwegi*. U.S.P.R.R. Ex. & Surveys, 35<sup>th</sup> Parallel. Botany, Plate XXIV [92].
- *Bouteloua Polystachya*. U.S.P.R.R. Ex. & Surveys, California. Botany, Plate X [93].
- *Echinocactus Whipplei* E. & B. U.S.P.R.R. Ex. & Surveys, 35<sup>th</sup> Parallel. Cactaceæ, Plate I [94].
- 1-2 *Echinocactus Polyancistrus*, E. & B. 3-5 *Echinocactus Lecontei* E. U.S.P.R.R. Ex. & Surveys, 35<sup>th</sup> Parallel. Cactaceæ, Plate II [95].
- 1-2 *Echinocactus Wislizeni*, E. 3. *E. Emoryi*, E. 4-6 *E Polycephalus* E & B. U.S.P.R.R. Ex. & Surveys, 35<sup>th</sup> Parallel. Cactaceæ, Plate III [96].
- 1-3 *Cereus Phœniceus*, E. 4-5 *Cereus Conoideus* E. & B. 6-7 *Cereus Triglochidiatus*, E. 8 *C. Bigelovii*. 9 *C. Bigelovii* [?] *Zuniensis*. U.S.P.R.R. Ex. & Surveys, 35<sup>th</sup> Parallel. Cactaceæ, Plate IV [97].
- 1. *Cereus Hexaedrus*, E & B. 2-3 *C. Gonacanthus*, E. & B. 4-7 *C. Engelmanni* var *Variegatus*. U.S.P.R.R. Ex. & Surveys, 35<sup>th</sup> Parallel. Cactaceæ, Plate V [98].
- 1-3 *Opuntia Chlorotica*, E. & B. 4-5 [O?] *Procumbens*, E. & B. U.S.P.R.R. Ex. & Surveys, 35<sup>th</sup> Parallel. Cactaceæ, Plate VI [99].
- 1-2 *Opuntia Occidentalis*, E. & B. 3-4 *O. Angustata*, E. & B. U.S.P.R.R. Ex. & Surveys, 35<sup>th</sup> Parallel. Cactaceæ, Plate VII [100].
- 1 *Opuntia Engelmanni* var *Cyclodes*, E. & B. 2-3 *Opuntia Tortispina*, E. & B. U.S.P.R.R. Ex. & Surveys, 35<sup>th</sup> Parallel. Cactaceæ, Plate VIII [101].
- 1-5 *Opuntia Camanchica*, E. & B. 6-8 *Opuntia Mohavensis*, E. & B. U.S.P.R.R. Ex. & Surveys, 35<sup>th</sup> Parallel. Cactaceæ, Plate IX [102].
- 1-2 *Opuntia Vulgaris*, Mill. 3-5 *Op. Rafinesquii*, E. U.S.P.R.R. Ex. & Surveys, 35<sup>th</sup> Parallel. Cactaceæ, Plate X [103].
- 1 *Opuntia Rafinesquii*, minor, E. 2-3 *Op. Rafinesquii*, grandiflora, E. 4, *Opuntia Fusco* – *Atra*, E. U.S.P.R.R. Ex. & Surveys, 35<sup>th</sup> Parallel. Cactaceæ, Plate XI [104].
- 1-3 *Opuntia Cymochila*, E. & B. 4-6 *Opuntia Stenochila*, E. & B. 7-8 *Opuntia Fusiformis*, E. & B. 9. *Opuntia Brachyarthra*, E. & B. U.S.P.R.R. Ex. & Surveys, 35<sup>th</sup> Parallel. Cactaceæ, Plate XII [105].

- 1-5 *Opuntia Basilaris*, E. & B. 6-7 *Opuntia Sphærocarpa* E. & B. U.S.P.R.R. Ex. & Surveys, 35<sup>th</sup> Parallel. Cactaceæ, Plate XIII [106].
  - *Opuntia Missouriensis*, D C. 1-3 var *Rufispina*. 4. var *Plantycarpa*. 5-7 var *Microsperma*. 8-10 var *Albispina*. U.S.P.R.R. Ex. & Surveys, 35<sup>th</sup> Parallel. Cactaceæ, Plate XIV [107].
  - 1-4 *Opuntia Missouriensis*. D C. var *Trichophora*, E. & B. 5-6 *Opuntia Hystricina*, E. & B. U.S.P.R.R. Ex. & Surveys, 35<sup>th</sup> Parallel. Cactaceæ, Plate XV [108].
  - *Opuntia Davisii*, E. & B. U.S.P.R.R. Ex. & Surveys, 35<sup>th</sup> Parallel. Cactaceæ, Plate XVI [109].
  - 1-4 *Opuntia Whipplei*, E. & B. 5-6 *Op. Arborescens*, E. U.S.P.R.R. Ex. & Surveys, 35<sup>th</sup> Parallel. Cactaceæ, Plate XVII [110].
  - NOTE: Genus note cut off from bottom of plate. U.S.P.R.R. Ex. & Surveys, 35<sup>th</sup> Parallel. Cactaceæ, Plate XVIII [111].
  - *Opuntia Bigelovii*, E. Cactaceæ, Plate XIX [112].
  - 1 *Opuntia Vaginata*, E. 2-5 *Opuntia Frutescens*, E. 2-3 var *Longispina*. 4-5 var *Brevispina*. Cactaceæ, Plate XX [113].
  - *Opuntia Tessellata*, E. Cactaceæ, Plate XXI [114].
  - *Opuntia Parryi*, E. *Opuntia Clavata*, E. *Opuntia Engelmanni* var *cyclodes*. *Opuntia Occidentalis*. *Opuntia Camanchica*. *Opuntia Angustata*. Cactaceæ, Plate XXII [115].
  - *Op. Tortisperma*. *Op. Fusiformis*. *Op. Rafinesquii*. *Op. Stenochila*. *Op. Vulgaris*. *Op. Cymochila*. var *montana*. *Op. Stenochila*. *Op. Hystricina*. *Op. Basilaris*. *Op. Missouriensis* var *platycarpa*, var *rufispina*, var *albispina*, var *trichophora*. Cactaceæ, Plate XXIII [116].
  - *Op. Missouriensis* var *microsperma*. *Op. Sphærocarpa*. *Op. Erinacea*. *Op. Tragilis*. *Op. Clavata*. *Op. Parryi*. *Op. Echinocarpa*. *Op. Whipplei*. *Op. Acanthocarpa*. *Op. Arborescens*. *Op. Vaginta*. *Op. Frutescens*. *Op. Tessellata*. Cactaceæ, Plate XXIV [117].
  - *Fissidens Limbatus*. *Leptodon Circinatus*. U.S.P.R.R. Exp. & Surveys, 35<sup>th</sup> Parallel. Mosses & Liverworts, Plate I [118].
  - *Barbula Brachyphylla*. U.S.P.R.R. Exp. & Surveys, 35<sup>th</sup> Parallel. Mosses & Liverworts, Plate II [119].
  - *Barbula Semitorta*. U.S.P.R.R. Exp. & Surveys, 35<sup>th</sup> Parallel. Mosses & Liverworts, Plate III [120].
  - *Grimmia Californica*. U.S.P.R.R. Exp. & Surveys, 35<sup>th</sup> Parallel. Mosses & Liverworts, Plate IV [121].
  - *Bryum Bigelovii*. U.S.P.R.R. Exp. & Surveys, 35<sup>th</sup> Parallel. Mosses & Liverworts, Plate V [122].
  - *Bryum Californicum*. U.S.P.R.R. Exp. & Surveys, 35<sup>th</sup> Parallel. Mosses & Liverworts, Plate VI [123].
  - *Bryum Occidentale*. U.S.P.R.R. Exp. & Surveys, 35<sup>th</sup> Parallel. Mosses & Liverworts, Plate VII [124].
  - *Bryum Bigelovii*. U.S.P.R.R. Exp. & Surveys, 35<sup>th</sup> Parallel. Mosses & Liverworts, Plate VIII [125].
  - *Hypnum Whippelanum*. U.S.P.R.R. Exp. & Surveys, 35<sup>th</sup> Parallel. Mosses & Liverworts, Plate IX [126].
  - *Hypnum Calyptratum*. U.S.P.R.R. Exp. & Surveys, 35<sup>th</sup> Parallel. Mosses & Liverworts, Plate X [127].
- **Box 22**
  - Folder 1: *Reports of Explorations and Surveys, to Ascertain the Most Practicable and Economical Route for a Railroad from the Mississippi River*

to the Pacific Ocean, 1835-1856 Vol. XI (Susan D. McKelvey's personal copy). The book gives accounts of exploration and explorers' names are underlined by McKelvey and notes entered.

- Enclosed in the book are:
  - Typewritten notes from *Silva North America* on plant discoveries, names of discoverers and locations.
  - *Science Papers*, article by Asa Gray on European Herbaria. Copy of information on Plants of the Rocky Mountain Region by G.B. Sudworth, *U.S. Department of Agriculture Bulletin* 460. Pub. 1917.
- Folder 2: Press releases (4) for *Botanical Exploration*.
- Folder 3: List of publishers and people to get permission to quote from publications, Letters asking for use of material for publishing (*for Botanical Exploration*)
- Folder 4: Notes/Corrections for *Botanical Exploration*.
- Folder 5: Arthur H. Clark Co.
  - Letters (1954) in reference to receiving permission to quote from *Pioneer Days in the Early Southwest*, by Grant Foreman:
    - To P.W. Galleher From Richard A Howard
    - To Karl Sax From P.W. Galleher
    - To Richard A Howard From P.W. Galleher
- Folder 6: Permission letters
  - Letters applying for and receiving permission to quote material in *Botanical Exploration*.
- Folder 7: Permission letters, continued
- Folder 8: Permission letters, continued
- Folder 9: American Guide Series
  - Handwritten notes by McKelvey on each state and whether she will be using quotes or not.
- Folder 10: "Not Used"
  - Letters applying for permission to quote and their replies.
  - Notecards with handwritten citations/notes for *Botanical Exploration*.
- Folder 11: McKelvey/Greyer/Messer
  - Photostat of a portion of Michaux's Journal, 1795
  - Horner, Nell (librarian at Missouri Botanic Gardens)
    - 6 Letters from McKelvey to Horner, 1948
    - 6 Letters to Horner from McKelvey
    - 4 Letters from McKelvey to Horner
    - 1 Letter to Horner from Bertha Dodge
    - Copy, in German, of letter from Charles A. Geyer to be translated
  - Ricket, H.W. (N.Y. Botanical Garden)
    - 2 Letters to Ricket from McKelvey, 1948
    - 2 Letters from Ricket to McKelvey, 1948
  - Salisbury, E.J. (Director Royal Botanical Gardens, Kew)
    - 2 Letters to Salisbury from McKelvey, 1948
    - 1 Letter from McKelvey to Salisbury
  - Ownbey, Marion (State College, Washington)
    - 2 Letters from Ownbey to McKelvey, 1948
    - 1 Letter to Ownbey from McKelvey



- "The Search for Mersh"
  - (This section might be called "The Search for Mersh")
  - Note concerning search for "Dr. Mersh of Luxembourg"
- Hanna, Leo A.
- Ewan, Joseph
  - 1 Letter from Hanna, 1953
  - 1 letter from Hanna to Joseph Ewan, 1953
  - Copy of paper in *Bot. Ex. of Western Montana Antedating 1850*, by Leo A. Hanna
  - 1 Letter from Joseph Ewan, 1953 (search for Mersh)
- Hacket, Margaret (Boston Athenaeum Library)
  - 1 Letter from Margaret Hacket, 1953



Yucca thornberi

- Schwarten, Lazella (Arnold Arboretum Librarian)
  - 1 Letter from J. Tuck Sherman (American Consul) to Schwarten (the search for Mersh) 1953
  - 1 Letter from Charles C. Colby (Boston Medical Library)
  - Sprunck, Alphonse (Le Directeur de la Bibliotheque Nationale, (Luxembourg)

- 1 Letter to the American Consul, 1953 from Sprunck  
Biography of Mersh in German with translation
  - Geyer, Charles A.
    - Geyer: *Botanical Notes on Charles A. Geyer*, Oregon Historical Quarterly Vol. XLI 1940, and Vol. XLII 1941
- **Box 23**
- Folder 1: Joseph Burke letters
  - Letter to Sir William Hooker, 1843
  - 1 Letter/journal 1844
  - 14 Letters to Sir William Hooker, 1842-1847
- Folder 2: Joseph Burke letters, continued
- Folder 3: William Gambel letters
  - 6 Letters to his mother, 1841-1845
  - 3 Letters from Thomas Nuttall, 1843-1846
  - 1 Letter "Dear Sir," 1844 (Written aboard U.S. Frigate Savannah)
- Folder 4: Charles A. Geyer letters
  - 18 Letters to Sir William J. Hooker, May 1845 - March 1847. 4 Copies (1 incomplete)
  - 1 Letter to George C. Thorburn, 1843
  - 1 Letter to Torrey and Gray, 1843
- Folder 5: Charles A. Geyer letters, continued
- Folder 6: Charles A. Geyer letters, continued
- Folder 7: Augustus Fendler letters
  - Letters from Fendler, 1848
- Folder 8: Alexander Gordon letters
  - 6 Letters to Sir William J. Hooker, Aug. 1844 - April 1845

## Series V: Collected Works

- **Box 23**
- Folder 1: Works by McKelvey
  - "Arctomecon californicum." *National Horticultural Magazine*, Volume 13, Number 4 (October 1934), pages 349 and 350.
  - "The Arnold Arboretum." *Harvard Alumni Bulletin*, Volume 38, Number 5 (January 17, 1936), pages 464 to 472.
  - "A Discussion of the Pacific Railroad Reports as Issued in the Quarto Edition." *Journal of the Arnold Arboretum*, Volume 40, Number 1 (January 1959), pages 38 to 67.
  - "A New Agave from Arizona." *Journal of the Arnold Arboretum*, Volume 30, Number 3 (July 1949), pages 227 to 230.
  - "A New Hybrid Lilac." *Horticulture*, Volume 5, Number 15 (August 1, 1927), page 302.
  - "Notes on Yucca." *Journal of the Arnold Arboretum*, Volume 16, Number 2 (April 1935), pages 268 to 271.
  - "Syringa Rugulosa, a New Species from Western China." *Journal of the Arnold Arboretum*, Volume 6, Number 3 (July 1925), pages 153 and 154.
  - "Taxonomic and Cytological Relationships of Yucca and Agave." *Journal of the Arnold Arboretum*, Volume 14, Number 1 (January 1933), pages 76 to 81. (Written with Professor Karl Sax).

- "A Verification of the Occurrence of *Yucca whipplei* in Arizona." *Journal of the Arnold Arboretum*, Volume 15, Number 4 (October 1934), pages 350 to 352.
- "A White Pine Blister Rust Demonstration." *Horticulture*, Volume 10, Number 18 (September 15, 1932), page 331.
- Folder 2: Harvard Alumni Bulletin, notes and correspondence
- Folder 3: Articles, Alice Eastwood
- Folder 4: Articles, Joseph Ewan
  
- **Box 24**
- Folder 1: Articles, Massachusetts
- Folder 2: Articles, New York
- Folder 3: Articles, Pennsylvania
- Folder 4: Articles, Midwest
- Folder 5: Articles, Colorado
  - *Trail and Time*
- Folder 6: Articles, Texas
- Folder 7: Articles, Texas, continued
- Folder 8: Articles, Northwest
  
- **Box 25**
- Folder 1: Articles, California
- Folder 2: Articles, England
- Folder 3: Articles, Miscellaneous
- Folder 4: Auguste Adolph Lucien Trecul
  - Numerical list of his collections (In *Botanical Exploration*, page 1049, S.D. McKelvey refers to the document ..."the manuscript lists in numerical order a total 1525 numbers as well as many additional insertions...There are two sets of entries...")
- Folder 5: Auguste Adolph Lucien Trecul, continued
  
- **Box 26**
- Folder 1: Archibald Menzies
  - These records appear to be Menzies' Journal recorded during the period of May 20, 1793 - October 5, 1793, aboard the *Discovery* under the command of George Vancouver.
  - There are a few references to botanizing; most of the entries are on exploration and the exchanges with local Indians. There is no specific reference which would positively identify the author, but all the evidence points to Menzies who had been appointed surgeon-naturalist aboard the flagship *Discovery*. There are many references to Sir Joseph Banks who had arranged the appointment.
  - In *Botanical Exploration*, S.D. McKelvey quotes from Menzies' journal. The entries she uses are not those included in the photostat copy included among the papers we have been looking at, but cover the following periods:
    - April 8 - October 13, 1792
    - November 14, 1792 - January 14, 1793
    - May 2 - 5, 1793
    - October 15 - December 8, 1793
  - Menzies' journals were published in two parts:
    - Part 1. documents the period April 8 - October 13, 1793

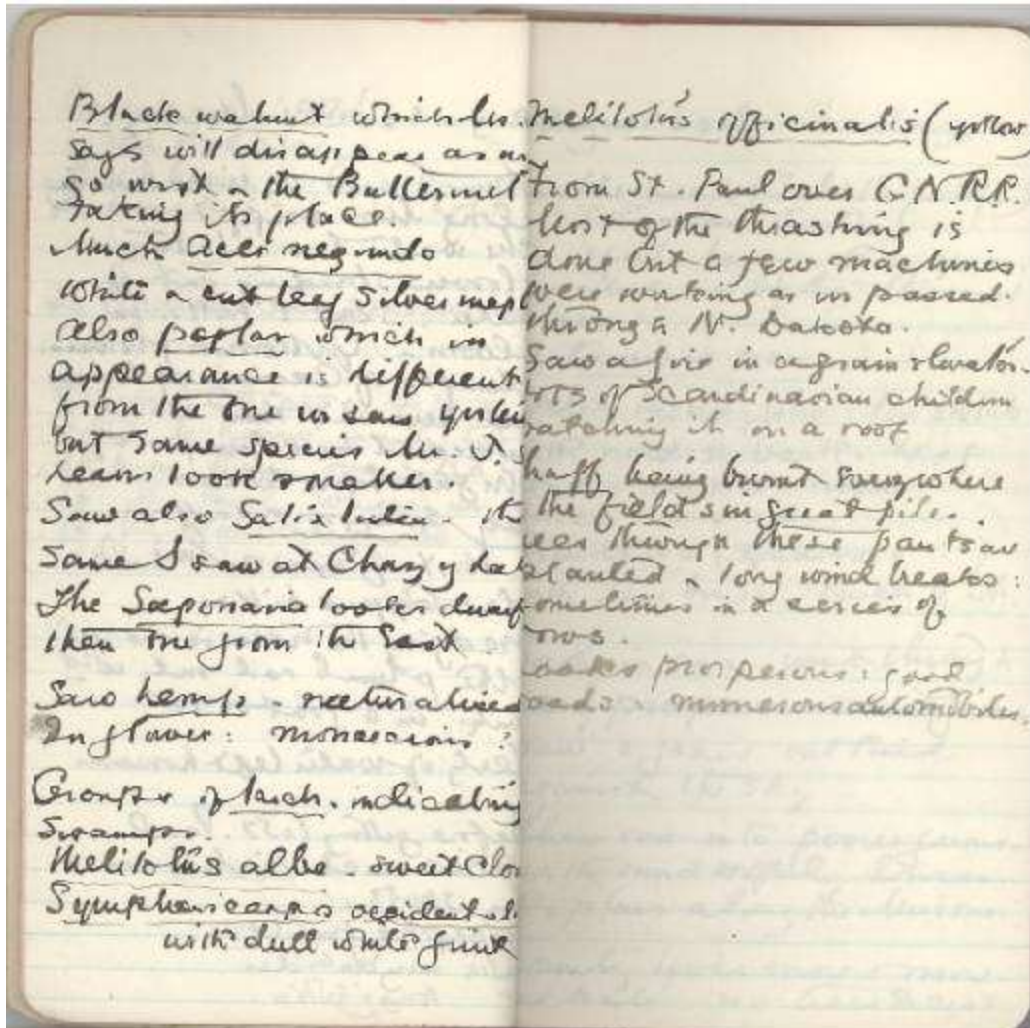
- Part 2. documents the period November 15 - December 9, 1793
  - The manuscript journal at the British Museum stops on February 16, 1794
- Folder 2: Archibald Menzies, continued
- Folder 3: Charles A. Geyer letters
  - 12 Charles A. Geyer letters, 1842-1846
  - 1 letter from Engelmann to Geyer, 1846
- Folder 4: Augustus Fendler
  - The collection records of Fendler 1846-1847
    - Two sets: Set 1. #1-452, 1886-1887
    - Set 2. #453-1026, 1846-1747
  - Description of plants, including location of collection, description of territory, date of collection, date of fruiting (in some cases)
  - McKelvey, in *Botanical Exploration* on page 1021 refers to: Fendler's beautifully penned collection records." The first entry is "Santa Fe, 1st-19th July, 1847" which corresponds with the first entry in the photostat. "Gray, in preparing his report, made notations on Fendler's manuscript, renumbered the plants when his the midst of the Compositae, having enumerated a total of 462 species, so that more than one half of Fendler's numbers awaited treatment in the continuation which Gray contemplated writing."
- Folder 5: Augustus Fendler, continued

#### **Series VI: Maps**

- **Box 27**
  - Folder 1: Southwest
  - Folder 2: Southwest, continued
  - Folder 3: Old maps, Texas, Mexico
  - Folder 4: McKelvey maps, originals
  - Folder 5: Trips to Glacier Park with J.G. Jack, 1921
    - Includes McKelvey diary, August and September 1921
  - Folder 6: Glacier Park, continued
  - Folder 7: Extra maps
  - Folder 8: Local maps
  - Folder 9: Maps

#### **Series VII: Research Materials and Notes**

- **Box 28**
  - Folder 1: Arizona
  - Folder 2: Materials from S.W. [Samuel Wood] Geiser
  - Folder 3: Comparisons of species
  - Folder 4: Field notes
  - Folder 5: Horticultural records
  - Folder 6: Hesperaloe
  - Folder 7: Dasyliirion
  - Folder 8: Biographical information, botanists
  - Folder 9: Newspaper articles
  - Folder 10: Notes



Diary page, Glacier Expedition

- Folder 11: Research
  - Audubon
  - Berlandier
  - Beyrich, Dodge, and Dragoons
  - Coulter
  
  - Cramer, Z., Cuming (the navigator)
  - Dana, R.H., Jr.
  - Deppe, Ferdinand
  - David Douglas
- Folder 12: Research, continued
  - Drummond
  - Duglos de Mogia [?]
  - Emory
  - Fremont
  - Geyer
  - John Goldie

- Gray, Robert
  - Hartweg
  - James
  - Kotzebue
  - Leavenworth, M.C.
  - Lindheimer
  - Lindley, John
  - McLeod
- **Box 29**
- Folder 1: Research, continued
  - Malaspina
  - Maps
  - Maximilian
  - Miscellaneous
  - Parry, C.C.
  - Spalding
  - U.S. Explor. Exped.
  - Wallace and Baxter
  - Walthowser, Benjamin
  - Webster, J.W.
  - Charles Wright
- Folder 2: Miscellaneous
- Folder 3: Miscellaneous
- **Volume:** Shaw, George Russell. *The genus Pinus*, 1914. McKelvey's personal copy. Transferred from the Harvard Botany Libraries, 2012. Hollis #006482296

### **Series VIII: Photographs**

- 7 boxes containing primarily 5"x7" black and white prints of McKelvey's expeditions to the southwestern United States from 1929-1932 and from 1935-1936. Photographs are from Arizona, Nevada, Texas, and California. Photographs are labeled and correspond to notebooks in the collection.
  - **Box 30:** Cacti and Views. 1929-1930 from Arizona, Nevada and California
  - **Box 31:** Shrubs and Herbaceous Plants and Trees. 1929-1931 from Arizona, Nevada and Texas
  - **Box 32:** Trees. 1929-1930. Arizona, California and Nevada
  - **Boxes 33-34:** Yucca and Agave. 1929-1931. Arizona and Texas. Additional photographs from O.E. Hamilton trip, 1935 as well as "Winter 1935/36 in La Quinta, CA"
  - **Box 35:** Yucca Specimen photographs and Agave field photos. 1929-30, 32. Texas, Arizona, Massachusetts, New Jersey.
  - **Box 36:** Cacti (significant loss due to cellulose nitrate negative decomposition) 1929. Arizona.

**S.D. McKelvey's first trip (1928) is not represented here. Nor, does it seem, are trips from 1932 through 1934.**



- **Box 37**

- Susan D. McKelvey; Photographs of *Yucca* spp.; Species A-E
  - *Yucca angustissima*
  - *Yucca arizonica* McKelvey, McKelvey 1339
  - *Yucca arizonica* McKelvey, McKelvey 1630 and adjoining plant



*Yucca thornberi*

- *Yucca arizonica* McKelvey, McKelvey 2120
- *Yucca arizonica* McKelvey, McKelvey 2121
- *Yucca arizonica* McKelvey, same group as McKelvey 2673
- *Yucca arizonica* McKelvey, same group as McKelvey 4047
- *Yucca arizonica* McKelvey, McKelvey 4962
- *Yucca arizonica* McKelvey, McKelvey 4964
- *Yucca arizonica* McKelvey, bet. Santa Cruz River and Nogales

- *Yucca arizonica* McKelvey, literature
  - *Yucca australis*, *Yuccavalida*
  - *Yuccabaccata* torr., herbarium specimens
  - *Yuccabaccata* torr., McKelvey 942
  - *Yucca baccata* torr., McKelvey 1909, 1910
  - *Yucca baccata* torr., McKelvey 4125
  - *Yuccabaccata* torr., McKelvey 4863
  - *Yucca baccata* torr., McKelvey 4865
  - *Yucca baccata* torr., McKelvey photos, no specimens, Arizona
  - *Yucca baccata* torr., McKelvey 2354
  - *Yucca baccata* torr., McKelvey photos, no specimens, Nevada
  - *Yucca baccata* var. *vespertina* McKelvey, McKelvey 900E
  - *Yucca baccata* var. *vespertina* McKelvey, McKelvey 1652
  - *Yucca baccata* var. *vespertina* McKelvey, McKelvey 2167
  - *Yucca baccata* var. *vespertina* McKelvey, McKelvey 4069 and adjoining plants
  - *Yucca baccata* var. *vespertina* McKelvey, McKelvey 4134
  - *Yucca baccata* var. *vespertina* McKelvey, miscellaneous McKelvey photos, Arizona
  - *Yucca baccata* var. *vespertina* McKelvey, McKelvey photos, no specimens, Utah
  - *Yucca brevifolia* Engelm., McKelvey 511
  - *Yucca brevifolia* Engelm., McKelvey 1660
  - *Yucca brevifolia* Engelm., McKelvey 2539, 2540, 2533, 2534
  - *Yucca brevifolia* Engelm., photos of herbarium specimens
  - *Yucca brevifolia* Engelm., McKelvey photos, no specimens, California
  - *Yucca campestris*
  - *Yucca carnerosana* (Trel.) McKelvey, herbarium specimens
  - *Yucca carnerosana* (Trel.) McKelvey, McKelvey 1960
  - *Yucca carnerosana* (Trel.) McKelvey, McKelvey 1961
  - *Yucca confinis* McKelvey, McKelvey 4966, type locality
  - *Yucca confinis* McKelvey, McKelvey 2099, type;
  - *Yucca constricta* Buckley
  - *Yucca elata*.
- **Box 38**
    - Susan D. McKelvey; Photographs of *Yucca* spp.; Species F-SCHI
      - *Yucca faxoniana* (Trel.) Sargent, herbarium specimens
      - *Yucca faxoniana* (Trel.) Sargent, micel. McKelvey photos, Texas
      - *Yucca faxoniana* (Trel.) Sargent, McKelvey 2053, 2054
      - *Yucca glauca*; *Yucca harrimaniae*
      - *Yucca intermedia* and var. *namosa*





*Yucca thompsoniana*

- *Yucca kanabensis*
  - *Yucca newberryi*
  - *Yucca pallid*
  - *Yucca peninsularis*
  - *Yucca rostrata*
  - *Yucca rupicola*, group of McKelvey 1659
  - *Yucca schidigera* Roezl, McKelvey 2246
  - *Yucca schidigera* Roezl, McKelvey 2718
  - *Yucca schidigera* Roezl, McKelvey 2719
  - *Yucca schidigera* Roezl, McKelvey 5060
  - *Yucca schidigera* Roezl, McKelvey photos, no specimens, California
  - *Yucca schidigera* Roezl, McKelvey photos, no specimens, Nevada
  - No label [*Yucca schidigera* Roezl].
- **Box 39**
    - Susan D. McKelvey; Photographs of *Yucca* spp.; Species SCHO-U
      - *Yucca schotti* Engelm., herbarium specimens
      - *Yucca schotti* Engelm., McKelvey 1620
      - *Yucca schotti* Engelm., McKelvey 4960
      - *Yucca schotti* Engelm., McKelvey 4963A

- *Yucca schottii* Engelm., McKelvey 4963
- *Yucca schottii* Engelm., McKelvey 4965
- *Yucca schottii* Engelm., McKelvey 4967
- *Yucca schottii* Engelm., McKelvey photos, no specimens
- *Yucca standleyi*
- *Yucca thompsoniana*
- *Yucca thornberi* McKelvey, McKelvey 1570
- *Yucca thornberi* McKelvey, McKelvey 1585
- *Yucca thornberi* McKelvey, McKelvey 1627, type
- *Yucca thornberi* McKelvey, McKelvey 4961
- *Yucca thornberi* McKelvey, McKelvey 4961A
- *Yucca torreyi* Shafer, McKelvey photos, no specimens, Texas
- *Yucca torreyi* Shafer, McKelvey 2018
- *Yucca torreyi* Shafer, McKelvey 2638
- *Yucca torreyi* Shafer, McKelvey 2016
- *Yucca torreyi* Shafer, McKelvey 1956, type
- *Yucca torreyi* f. *parriflora* McKelvey, McKelvey photos, no specimens
- *Yucca treculeana* Carr., herbarium specimens
- *Yucca treculeana* Carr., McKelvey 1704
- *Yucca treculeana* Carr., McKelvey 1764
- *Yucca treculeana* Carr., McKelvey 1765
- *Yucca treculeana* Carr., McKelvey 1780
- *Yucca treculeana* Carr., McKelvey 1782
- *Yucca treculeana* Carr., McKelvey 1847
- *Yucca treculeana* Carr., McKelvey 2611
- *Yucca treculeana* Carr., McKelvey 2616, cultivated
- *Yucca treculeana* Carr., McKelvey photos, no specimens, spontaneous and cultivated
- *Yucca treculeana* var. *succulenta* McKelvey, McKelvey 2060, type
- *Yucca treculeana* Carr. var. *succulenta* McKelvey, McKelvey 2608
- *Yucca treculeana* var. *succulent* McKelvey, McKelvey 2610
- *Yucca utahensis*.

- **Box 40**

- Susan D. McKelvey; Photographs of *Yucca* spp.; V-Z, HYBRIDS, INDET.
  - *Yucca verdiensis*
  - *Yucca whipplei* (5097, 2704A, 2705, 2720, 2722, group of 2722, 2723, 2725, 2728, 5001, 5003, young plants 171-G 181-G, frost injury, plants with inflorescence 181-4 181-5 181-7, 177-8 171-11 12 172-1)
  - Possible hybrid between *Yucca campestris* X *Yucca constricta* (text following *Yucca capmestris*)

- Possible hybrids between 1. *Yucca rupicola* X *Yucca constricta*, 2. *Yucca constricta* X *Yucca arkansana*
- Possible hybrid of *Yucca pallid* X *Yucca arkansana* (text following *Yucca pallida*)
- Possible hybrid of *Yucca rupicola* X *Yucca thompsoniana* (*Yucca reverchoni* Trel.), (text following *Yucca thompsoniana*)
- *Yucca* sp? Region of Devil's River Texas
- *Yucca* sp? Laguna, Uvalde Co., Texas, McKelvey 2592
- *Yucca* sp? McKelvey 931
- *Yucca* sp? McKelvey 1040
- *Yucca* sp? McKelvey 2142
- *Yucca* sp? McKelvey 2142A
- *Yucca* sp? Miscellaneous, McKelvey photos, no specimens
- 1. *Yucca rigiola*, 2. *Yucca brevistyla* (sp. Nov.), 3. Bigelow, Bafatello, Larmoros, etc.



Crataegus Williamsu